

IONIQ 6



Awaken your world

The IONIQ 6 is designed with precision to seamlessly enhance your daily lives, providing a haven to unleash your full potential. With its streamlined aerodynamic profile and mindful cocoon-like interior, it sets a new benchmark for electric mobility.





Signature Parametric Pixel Headlamp*



New Hyundai Emblem



Rear Spoiler with Integrated LED Brake Light



20-inch Alloy Wheels*

Electrified streamliner

The harmonious blend of aesthetics and functionality in the IONIQ 6 creates an aerodynamic silhouette that reduces air resistance, resulting in a smoother and more dynamic driving experience.

Future form Classic shape

The aerodynamic silhouette showcases a balance between minimalist lines and sensual curves. Additionally, the Electric Global Modular Platform (E-GMP) creates a more spacious interior cabin space and enables efficient battery placement.



E-GMP

Electric Global Modular Platform

An exclusive platform for the next generation of electric vehicles offering innovative design, spacious cabin, high performance, fast electric charging, and long-range capability.



*Selected trims only



Interactive LED Steering Wheel*
Four Interactive Pixel Lights on the steering wheel and LED lights on the crash pad indicate various car statuses (welcome/goodbye, voice recognition, etc).



12.3-inch Driver's Supervision Instrument Cluster with Full TFT Display
The 12.3-inch Digital Cluster and 12.3-inch infotainment touchscreen are combined into a single screen, providing a wider display that makes accessing information easier.



Door Trim Storage Space
The Door Trim Storage Space is ideal for holding bottles and smartphones.

*Selected trims only

Mindful cocoon

The cocoon-shaped interior of the IONIQ 6 provides a spacious and comfortable space, with architectural details and features that focus on your comfort.



Zero Gravity Front Seats*

*Selected trims only



Premium Bose Sound System with Eight Speakers*



Centre Console with Cup Holder



Button-less Slim Door / Dual Zone LED Adjustable Interior Ambient Light*
The front door buttons have been relocated to the centre console, freeing up valuable space and storage. Additionally, dual-colour ambient lighting integrated into the upper and lower door trims offers a choice of 64 colours or 6 customisable dual-colour themes to match your mood.

Advanced electric performance



EV Performance Tune-Up
 Customise the vehicle's performance elements such as steering force, motor output, accelerator pedal sensitivity, and drive mode to your driving preferences.



Electric Active Sound Design (e-ASD)*
 IONIQ 6 elevates your driving pleasure with virtual spaceship-like sound that immerses you in the feeling of outer space.



Speed Sync Lighting*
 To enhance the dynamic driving experience, the ambient light's brightness adjusts from 10% at 30 km/h to 100% at 100 km/h.

*Selected trims only

Features



Signature Parametric Pixel Headlamp*



Heated Side Mirrors with LED Turn Signal Indicators



Auto-Flush Door Handle*



Shark Fin Antenna



Electric Tailgate

*Selected trims only



Dual-Zone Climate Control



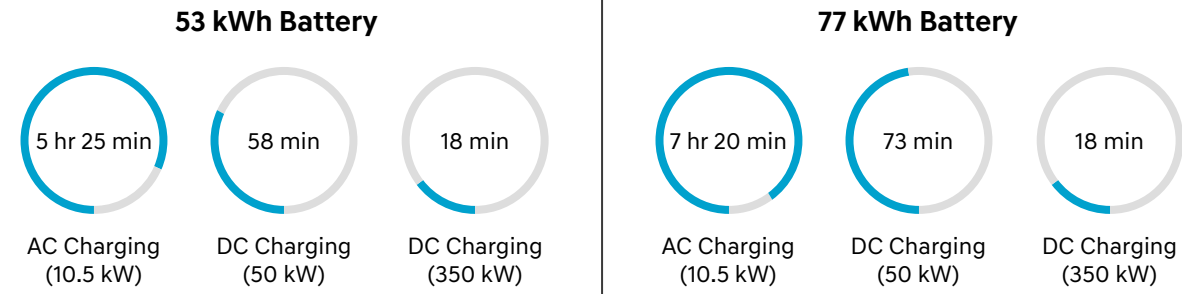
Interactive LED Steering Wheel*



Wireless Charging

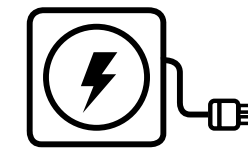
Charge flexibly

Experience fast and convenient charging with your IONIQ 6.



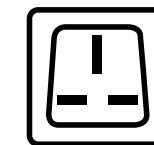
Vehicle-to-Load (V2L) technology

The V2L feature enables the IONIQ 6 to become a 3.6 kW power source for electronic devices, adding convenience and comfort while on the go.



Outdoor Vehicle-to-Load (V2L)

The V2L charging port on the exterior of the vehicle is able to power various electronic devices during your outings.



Indoor Vehicle-to-Load (V2L)

There is also a 3-pin socket located under the middle seat of the second row, which allows you to plug in and charge electronic items while stationary or driving.



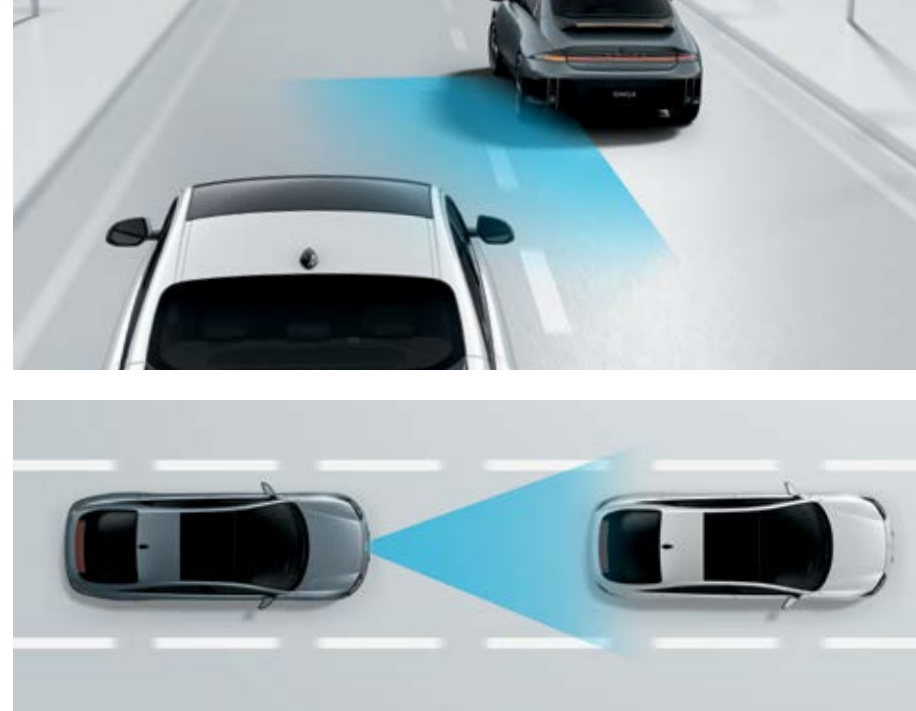
Hyundai SmartSense



Lane Keeping Assist (LKA)

Designed to help you stay in your lane. The Lane Keeping Assist sends visual and audible alerts if you start drifting out of your lane without signalling and initiates subtle corrective steering assistance to steer you back.

*Selected trims only



Blind Spot Collision Avoidance Assist (BCA)*

Radars detect traffic in the vehicle's blind spot, warning drivers with an audible alarm when the indicator is used so you can be aware of the traffic around you.

Smart Cruise Control (SCC)

Monitoring the stop-and-go traffic situation with advanced radar sensors, the Smart Cruise Control system allows you to drive at speeds of over 30 km/h without depressing the accelerator pedal. It maintains a safe car distance by automatically engaging the brakes and elevating the speed intuitively with Electronic Stability Control to make your driving experience more comfortable on congested roads.



Rear Cross-Traffic Collision-Avoidance Assist (RCCA)*

Perfect for parking lots. When reversing out of areas with low visibility, the system not only warns the driver if vehicles approach from the side. It also applies the brakes automatically.

Surround View Monitor (SVM)*

A 360° video view of the vehicle's surroundings is displayed in 3D while driving and parking.

*Selected trims only



Forward Collision-Avoidance (FCA)

The front view camera and radar sensors warn drivers of imminent collisions with vehicles and objects, applying the brakes when necessary to avoid collisions. The system includes Junction Assist (Turning) across the range.

Connected car services

The latest upgrade of Bluelink connected car services - delivering seamless connectivity with online voice recognition and a wide range of features to make your drive more convenient and enjoyable. Additional voice recognition features let you activate and control features like climate settings, and infotainment controls through a simple voice command.



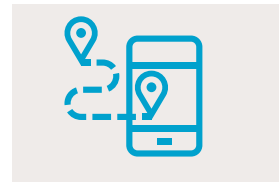
Find My Car

Forgot where you parked? No problem. Just open the Bluelink app and the map will guide you there.



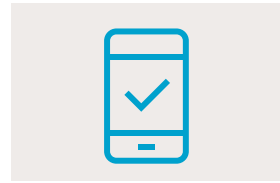
Remote Door Lock & Unlock

Forget to lock your car? Don't worry, your IONIQ 6 will let you know by sending a push notification to your smartphone. Then, after entering your PIN, you can lock or unlock the doors using a button in the Bluelink app.



Last Mile Navigation

If you have to park before you reach your end destination, you can handover navigation from the car to the app. Your phone will then guide you exactly where you want to go with the help of augmented reality or Google Maps.



On-Demand Diagnostics

For more peace of mind, you can run a full vehicle diagnostics check on your vehicle's health using the Bluelink app on your smartphone.



Remote Climate Settings

Too hot outside? No problem. You can use the app to activate the air-condition no matter where you are.

Over The Air (OTA) software updates

The IONIQ 6 supports Over The Air (OTA) vehicle software updates. This means getting the latest improvements and features at a push of a button, eliminating dealership visits. Envision your IONIQ 6 constantly evolving and refining itself seamlessly.



Features Improvements

Your IONIQ 6 keeps getting better, automatically. Over The Air vehicle software updates deliver new features updates wirelessly, so you can enjoy the latest enhancements as soon as they are released.

Latest Maps and Infotainment

Stay effortlessly in sync with the latest maps and infotainment features. Bluelink updates itself wirelessly, right in your car, eliminating dealerships visits.

Ecologically responsible



BIO-TPO Crash Pad

Environmentally friendly fibres extracted from sugarcane are used in the crash pad.



Eco-Processed Leather

The leather material for the seats uses eco-friendly, processed natural flaxseed oil.



Bio Paint

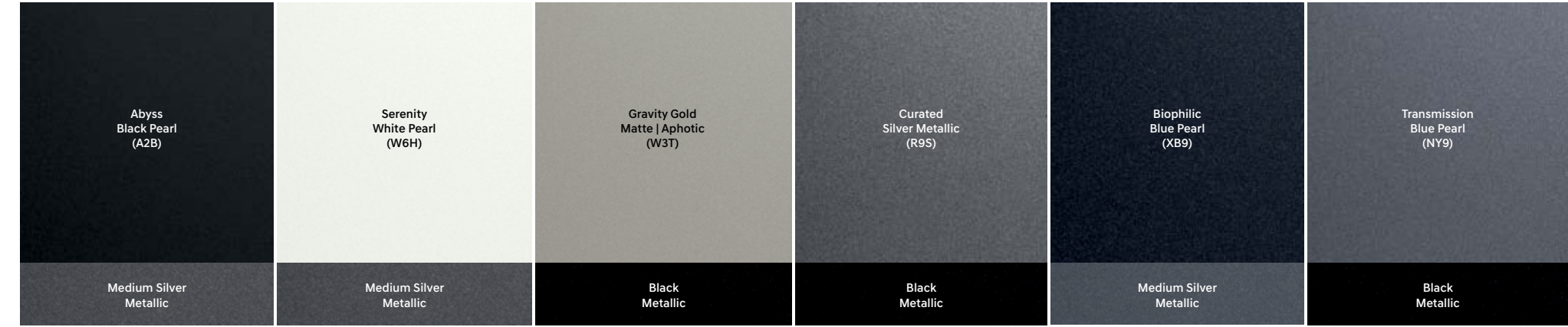
The dashboard and door trims are coated with bio paint made from rapeseed flowers and corn extract.



BIO-PET Yarn Headlining

The material used for the headliner employs environmentally friendly fibres extracted from sugarcane.

Exterior colours



Interior colours



Black Monotone (NNB)



Dark Gray & Light Gray Two Tone (YTH)

Specifications

Trim	EXCLUSIVE	PRESTIGE	INSPIRATION
Battery (kWh)	53	53 & 77	77
Drivetrain	2WD	2WD	AWD
Wheels & Tyres (Inch)	18" Alloy	18" Alloy	20" Alloy
Exterior			
Multi-Faceted Reflector LED Headlamp (MFR LED)	•	-	-
Signature Parametric Pixel Headlamp	-	•	•
LED Rear Combination Lights	•	•	•
Intelligent Front-Lighting System (IFS) Headlights	-	•	•
Heated Side Mirrors with LED Turn Signal Indicators	•	•	•
Shark Fin Antenna - Smoked Finish Transparent	•	•	•
Active Air Flap	•	•	•
Solar Glass (Windshield & Front Row)	-	•	•
Rear Spoiler with Integrated LED Brake Light	•	•	•
Manual-Flush Door Handle	•	-	-
Auto-Flush Door Handle	-	•	•
Wide Sunroof	-	•	•
Interior			
12.3-inch Driver's Supervision Instrument Cluster with full TFT Display	•	•	•
Leather Wrapped Steering Wheel & Remote Control	•	•	•
Electronic Chromic Rear View Mirror	•	•	•
Paddle Shifter (Regenerative Braking, i-Pedal)	•	•	•
Shift-by-Wire with Drive Mode Selection	•	•	•
Centre Console with Cup Holder	•	•	•
Eco-Processed Leather Seat Covering	•	-	-
Natural Leather Seat Covering	-	•	•
Auto Safety Power Window	•	•	•
Windshield Acoustic Film	•	•	•
Metal Door Scuff & Pedal	-	•	•
Dual Zone LED Adjustable Interior Ambient Light	-	•	•
Driver Power Seat (2-way lumbar support)	•	-	-
Driver & Front Passenger Power Seat (2-way lumbar support + Ventilated)	-	•	•
Driver Memory Seat	-	•	•
Zero Gravity Seats	-	•	•
Rear Split Folding Seats (60:40)	•	•	•
ISOFIX Child Sear Anchorage Point	•	•	•

Trim	EXCLUSIVE	PRESTIGE	INSPIRATION
Battery (kWh)	53	53 & 77	77
Drivetrain	2WD	2WD	AWD
Wheels & Tyres (Inch)	18" Alloy	18" Alloy	20" Alloy
Safety			
Vehicle Management System:			
- Vehicle Dynamic Control (VDC)	•	•	•
- Anti-lock Brake System (ABS)	•	•	•
- Electronic Stability Control (ESC)	•	•	•
- Hill-Start Assist Control (HAC)	•	•	•
- Electronic Stability Programme (ESP)	•	•	•
- Traction Control System (TCS)	•	•	•
- Multi-Collision Braking (MCB)	•	•	•
Central Door Lock with Immobilizer & Alarm	•	•	•
7 Airbags (including centre airbag)	•	•	•
Virtual Engine Sound System (VESS)	•	•	•
Child Lock	•	•	•
Advanced Rear Occupant Alert	-	•	•
Smart Cruise Control (SCC) with Stop & Go	•	•	•
Forward Collision - Avoidance Assist (FCA)	•	-	-
Forward Collision - Avoidance Assist (FCA) with Avoidance Steering Assist	-	•	•
Lane Keeping Assist (LKA)	•	•	•
Lane Following Assist (LFA)	•	•	•
Driver Attention Warning (DAW)	•	•	•
Parking Distance Warning (PDW) - Forward & Reverse	•	-	-
Parking Collision Avoidance Assist (PCA) - Forward, Reverse, Side	-	•	•
Blind-Spot Collision-Avoidance Assist (BCA)	-	•	•
Safe Exit Warning (SEW)	-	•	•
Rear Cross-Traffic Collision - Avoidance Assist (RCCA)	-	•	•
Blindspot View Monitor (BVM)	-	•	•
Manual Speed Limit Assist	•	•	•
EV Performance Tune-up	•	•	•
Tyre Pressure Monitoring System	•	•	•

Specifications

Trim	EXCLUSIVE	PRESTIGE	INSPIRATION
Battery (kWh)	53	53 & 77	77
Drivetrain	2WD	2WD	AWD
Wheels & Tyres (Inch)	18" Alloy	18" Alloy	20" Alloy
Comfort & Convenience			
Over The Air (OTA) Software Update	•	•	•
Electronic Parking Brake (EPB)	•	•	•
High Beam Assist (HBA)	•	•	•
Rain Sensing Wiper	•	•	•
Wireless Charger	•	•	•
Smart Keyless Entry & Push Start Button Switch	•	•	•
Interactive LED Steering Wheel	-	•	•
Head-Up Display (HUD)	-	•	•
Dual-Zone Climate Control & Rear Air-Conditioner Vent	•	•	•
Rear View Monitor (RVM) with Dynamic Parking Guidance	•	-	-
Surround View Monitor (SVM) Parking System	-	•	•
Remote Smart Parking Assist (RSPA 2)	-	•	•
Electric Tailgate	•	•	•
Indoor Vehicle-to-Load (V2L)	•	•	•
Outdoor Vehicle-to-Load (V2L)	•	•	•
12.3-inch Touchscreen Multimedia System	•	•	•
Wired Android Auto™ & Apple CarPlay™	•	•	•
6-Speaker Standard Sound System	•	•	-
BOSE Premium Audio (7 speakers + 1 subwoofer with amplifier)	-	-	•
Hands-Free Bluetooth* Connectivity with Voice Recognition	•	•	•
USB Connectivity Ports	•	•	•
e-ASD (Active Sound Design)	-	-	•
Tyre Mobility Kit	•	•	•

Battery Capacity	53 kWh (Standard Range)	77 kWh (Long Range)	
Drivetrain	2WD	2WD	AWD
Acceleration 0 - 100 km/h	9.4 sec	7.4 sec	5.1 sec
Max. Power	107 kW	168 kW	239 kW
Max. Torque	350 Nm	350 Nm	605 Nm
Battery			
Type	Lithium-Ion		
Power Output	173 kW	277 kW	
Energy Density	153 Wh/kg	162 Wh/kg	
On-board Charger (OBC)			
Max. Capacity	10.5 kW		
Standard			
CO2 Emissions	56 g/km	58 g/km	68 g/km
Driving Range*	429 km (WLTP cycle)	614 km (WLTP cycle)	519 km (WLTP cycle)
Energy Consumption	139 Wh/km	143 Wh/km	169 Wh/km
VES Banding	A1		
Charge Time			
Standard	10.5 kW OBC (10 - 100%)	5 hr 25 min	7 hr 20 min
Quick Charge	50 kW (10 - 80%)	58 min	73 min
	350 kW (10 - 80%)	18 min	18 min
Measurements			
Length	4,855 mm		
Width	1,880 mm		
Height	1,495 mm		
Wheelbase	2,950 mm		
Tread (Front)	1,635 mm (18" Wheel)		1,630 mm (20" Wheel)
Tread (Rear)	1,644 mm (18" Wheel)		1,639 mm (20" Wheel)
Min. Turning Radius (Tyre)	5.91 m		
Weight			
Curb Weight (kg)	1,775 - 1,833 kg	1,910 - 1,986 kg	2,020 - 2,096 kg
Gross Vehicle Weight (kg)	2,280 kg	2,410 kg	2,520 kg
Boot Capacity (L)	401 L		
Frunk (L)	45 L	45 L	14.5 L

Hyundai Motor Group reserves the right to make changes to technical specifications and equipment content without notice.

*Range according to WLTP cycle. Driving range may vary slightly depending on road conditions, your driving style and temperature. It is also dependent on the types of tyres equipped.



The Hyundai 5-Year Unlimited Mileage Warranty and 10 Years or 160,000 km warranty on vehicle high voltage battery unit, applies only to Hyundai IONIQ 6 that have been originally sold by Komoco Motors Pte Ltd or Hyundai Motor Group Innovation Center in Singapore (HMGICS) to an end-customer, as set out in terms and conditions of the warranty booklet. Other terms and conditions apply.

All the information contained in this brochure is provisional and subject to change without notice and is intended only as preliminary notification. Possible variations in the representation of vehicle colours are due to the limitations of printing technology. The products shown correspond to the offer and the range of equipment for Singapore markets. The vehicles shown in this brochure may be equipped with additional equipment at extra cost, and not all model versions are included in this brochure. Hyundai Motor Group reserves the right to make changes to technical specifications and equipment content without notice.

Please consult Hyundai Motor Group Innovation Center in Singapore (HIMGICS) or Komoco Motors Pte Ltd for exact details.

Hyundai Motor Group Innovation Center in Singapore (HMGICS)
(+65) 6335 3984

Komoco Motors Pte Ltd
(+65) 6475 8888

Copyright ©2024 Hyundai Motor Group. All Rights Reserved.