

# The new EV6



Movement that inspires



Be inspired by movement.  
Introducing the new Kia brand.

Inspiration doesn't happen by chance. It comes to us when we get out of our comfort zone and enter new surroundings. When we see the world with fresh eyes and from new perspectives. We find it when we move. Kia is here to guide you through the inspirational power of movement, so you can reach your creative potential. That's why everything we create gives you the space to be inspired and the time to bring your ideas to life. So join us on this exciting journey and discover with Kia how movement inspires.



# Inspiring every journey. The Kia EV6.

From its distinctive exterior and innovative interior design to its intuitive advanced technologies, the fully electric Kia EV6 is created to inspire you on every journey.

Movement that inspires.





## More range. More time. More inspiration.

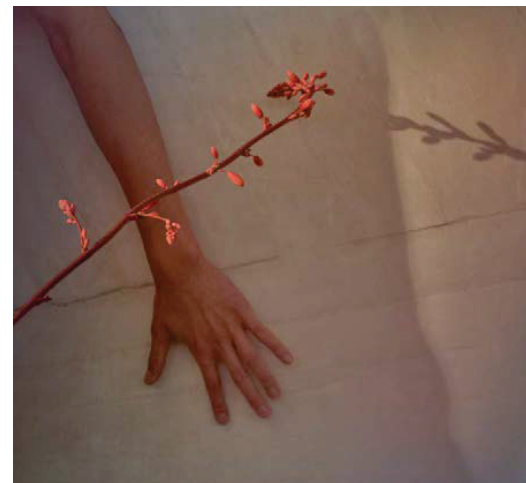
Inspiration isn't just about having an idea. It's about leaving your comfort zone and feeding your mind with new surroundings. That's why we designed the Kia EV6 - a car that with its up to 506 km range\* lets you explore more of what the world has to offer. Along with fast charging speeds that give you more time to create something new.

The Kia EV6 also creates more time for you to bring your ideas to life. It takes less than 18 minutes to charge from 10 to 80%.\* Ultra-fast charging means you have more time to spend on the things that matter to you most. Like coming up with your next big idea.

\* The range was determined according to the standardized EU measurement procedure (WLTP) based on 77.4 kWh battery pack, all wheel drive, and 19" wheels (pictured vehicle features 20" wheels). The individual driving style and other factors, such as speed, outside temperature, topography and the use of electricity-consuming devices/units, have an influence on the real life range and can possibly reduce it.

\*\* In order to achieve the maximum charging speed, EV6 must use an 800-volt electric vehicle charger that delivers at least 250 kW of electricity. Actual charging speed & charging time may be influenced by the battery temperature and exterior weather conditions.





## E-GMP. A new EV platform.

The Kia EV6 is Kia's first EV built on the Electric Global Modular Platform (E-GMP). Ultra-fast charging. Long range. Spacious interior. Zero emissions. All this is made possible by the new E-GMP platform. With the new platform we are taking EVs to the next level.

The Kia EV6. Only the first of many more great things to come.

The most inspiring thing  
we can create is motion.

A journey isn't just about getting from one location to another. It's about creating an experience, an emotion that inspires you to create ideas. The Kia EV6 is designed to deliver not only comfort, style and utility, but also emotion.





## Ideas need variety.

When it comes to creativity, it's about seeing the world in a different light. With the sophisticated Kia EV6 and the sporty GT-line, you have all the variety you need. Whether you're in for sportiness or laidback elegance: the different design lines make a great impression from every point of view.





## Make every detail count.

When many small things come together in harmony, big ideas aren't far away. That's why the fully electric Kia EV6 makes every detail count through clever use of space and a smart exterior concept.







## A new standard for sustainable mobility.

Interior design is about creating the most user-centric and immersive experience through design, intuitive technologies and sustainable elements. When you're inside the Kia EV6, there's plenty of cabin space, so you can breathe freely while the vegan leather and recycled PET materials emphasize the car's sustainable nature.



# An immersive journey for everyone.

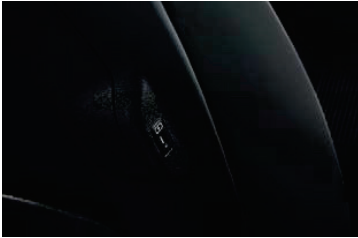
The immersive dual 12.3" panoramic curved displays enhance your driving experience by providing important information without you needing to take your eyes off the road. Along with a sound system designed to bring an immersive hi-fi listening experience to every seat. And in case your phone is running out of battery, the Kia EV6 comes equipped with a range of charging ports that complete the inspirational character of the interior.



**The dual 12.3" panoramic curved displays.** The Kia EV6's integrated curved displays are not only beautiful, but offer a truly immersive experience. They enhance the driving experience by providing high-definition navigation and important information, with minimal controls for an unobstructed and easy driving experience.



**Wireless phone charger.** The charging pad in the front centre console lets you charge compatible mobile phones wirelessly. It operates with up to 15W of power, so charging is reassuringly fast.



**USB ports on seatbacks.** Convenience is important for everyone on board. Rear seat passengers will find USB ports in the seatbacks in front of them, so they can power their devices whenever they want.



**Infotainment/climate switchable controller.** The switchable controller offers an intuitive way to interact with the car, while keeping all important information easily accessible. Press the one-touch infotainment icon or climate icon, and the relevant menus to make any adjustment you desire.



# Less searching and more discovering.

Let our technology handle the details. So you can stay more connected to the journey. By prioritizing information, the fully electric Kia EV6 lets you take in more of the world outside, and spend less time scanning screens and dials. Information is presented on clean, compact digital displays, and can even be projected onto the windscreen.



# Space innovation.

From soft, durable suede, to vegan leather and recycled materials: the Kia EV6 is ergonomically designed for your body's comfort and your peace of mind. Eco-friendly and sustainable. It's not just about style. This is a new way of being.



GT-line - Standard black suede with vegan leather bolsters.



**Wide sunroof.** Airflow adds to the sense of openness. The roomy dimensions of the Kia EV6 seem to expand with the wide tilt-sliding sunroof. It takes full advantage of the roof geometry, offering a broader opening for light and breezes to get inside.



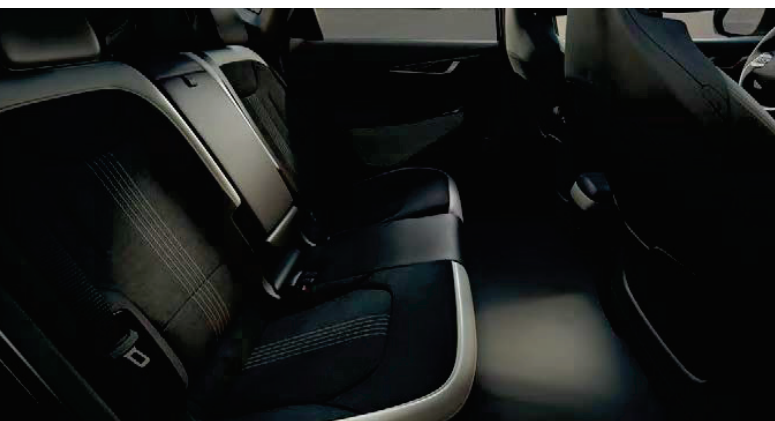
Single Motor Standard Range - Standard black vegan leather



**Relaxation comfort seats.** The front seats are slimmer and more comfortable and offer more adjustability than ever before. While you charge the Kia EV6, the Relaxion seats let you recline to optimize your posture and the distribution of pressure on your body.

## Relaxation as a design objective.

With a flat floor and a broad-shouldered frame, the Kia EV6 gave our designers more freedom to create the best design for you. The seats take up less space, but deliver more. The zero-gravity Relaxion comfort seats provide a wide range of settings so that your body is in its most comfortable position, minimizing the fatigue or discomfort you might have experienced with conventional seats, especially on long drives or when you're waiting for your car to top up its battery. Because when you're more relaxed, ideas flow better.



**Second-row seat comfort.** The slim front seats, the unique E-GMP platform layout and the flat floor give rear passengers more legroom. There are headrests in every position, and a centre armrest incorporates a storage box with sliding cupholder. Air vents on the B-pillars offer refreshing airflow.



**Heated and ventilated seats.** Ventilated front seats give the driver and front passenger a more comfortable ride when the weather is warm or humid. Control the fans using the console touch buttons and adjust the levels of heating to meet the needs of passengers in the front and rear.



# Cargo space as big as your ideas.

When you're starting from scratch on a new platform, the possibilities are endless. Especially when it comes to cargo storage. The Kia EV6 lets you store items in places you never imagined. Under the front bonnet, under the rear cargo floor, under the cargo screen and even in spaces between and under the seats. But in case you need to accommodate even bigger items, the rear seats also fold. Because ideas come in a wide range of sizes.



**Console tray.** The center console includes an armrest, cup-holders, a wireless charging pad above, and an open tray below that can hold shoes, tablets, or handbags.



**Front storage trunk (20  $\ell$ , 52  $\ell$ ).** Extra space is a useful benefit of the new Kia EV6 platform. That includes a convenient storage space under the front bonnet. It holds up to 20  $\ell$  on AWD models and up to 52  $\ell$  on 2WD models.



**Smart power tailgate.** The power tailgate can be set to open automatically to a desired height. Stand behind the parked Kia EV6 for three seconds, and the tailgate will open automatically.



**Remote second-row seatback folding.** Pull the remote release lever on the wall of the cargo space to fold the rear seatback down, creating 1,300  $\ell$  of storage capacity. With the lever's convenient location, it's like having an extra pair of hands when you need to load long or bulky items.



## Less time for worry, more time for inspiration.

Kia's DRIVE WISE applies the latest Advanced Driver Assistance System (ADAS) technologies to help ensure the ultimate in occupant and pedestrian safety. At the same time, it decreases fatigue that comes from daily commutes, traffic jams and stressful, tedious driving situations.

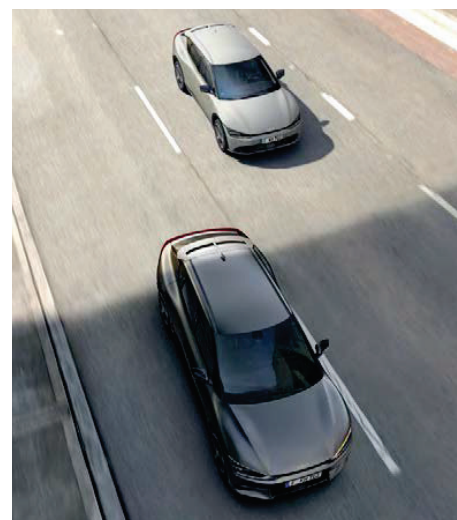
Our technology works to enhance your journey. To make it more enjoyable and relaxing.



**Safe Exit Assist (SEA).** When the occupant opens the door to exit the vehicle after a stop, a warning sounds if an approaching vehicle from the rear side is detected. The function also helps keep the rear door closed with the electronic child lock.



**Forward Collision-Avoidance Assist with junction turning and crossing (FCA).** FCA uses a front-view camera and radar to detect any vehicles, pedestrians or cyclists ahead. By warning and braking automatically, it can help you avoid, or reduce the severity of, an accident. The system also engages if you are crossing or turning at an intersection.



**Blind-Spot Collision-Avoidance Assist (BCA).** When you signal a lane change, you will be warned if a risk of collision with a vehicle approaching from the rear is detected. If the risk persists and increases, BCA automatically controls the vehicle to help avoid a collision. If you are exiting a parallel parking spot and there is a risk of a collision with an approaching vehicle, BCA automatically applies emergency braking.





## Be prepared for the unexpected.

No matter how careful we are, situations on the road are unpredictable. DRIVE WISE technology is always collecting data around you, running computations and learning, so as to find ways to protect you better. If it spots trouble, it warns you, and even steps in when needed. There's extra peace of mind in knowing that wherever you go, you are not alone out there.

With Remote Smart Parking Assist (RSPA) you can park or unpark the Kia EV6 even if you aren't inside. Using sensors, RSPA can safely move the Kia EV6 into or out of a parallel or perpendicular space. Braking is automatic if an obstacle is detected.



**Rear Cross Traffic Avoidance Assist (RCCA).** If there is a risk of collision with an oncoming vehicle on the left or right side while reversing, RCCA provides a warning. After the warning, if the risk of collision increases, RCCA automatically assists with emergency braking.



**Surround View Monitor (SVM).** When manoeuvring in confined spaces, multiple cameras give you a zoomable, 360° overhead view around the vehicle, so you can steer and park with confidence. There is no need to exit the vehicle to check clearances or ask others for help.

## In control of your charge status.

Time, distance and charging. These are constant concerns when it comes to an EV. That's why the Kia EV6 puts everything into perspective, so you are in control. The driver EV interface on the cluster screen gives you real-time updates and options with simple icons. Letting you know that everything is in order, so you can enjoy the ride without worrying about your next battery charge.



**Shift By Wire (SBW).** All you need to do to change gears between Reverse, Neutral and Drive is brake and turn the dial of the Shift by Wire system left or right. The P button puts the Kia EV6 in Park mode.

**Drive Mode Select (DMS).** The Kia EV6 can adjust to the way you like to drive. Choose Normal, Sport or Eco drive mode using steering wheel or voice controls. Sport mode lets you accelerate more quickly, while Eco saves energy to extend your driving range. Each mode has a theme display on the cluster screen with unique visual effects that may also switch from white to black at night.

**Smart regenerative braking system (SRS 2.0).** SRS 2.0 improves the vehicle's range and stability by optimizing front and rear-wheel regenerative braking. It can be operated with the steering wheel paddle switches and adjusts the level of regenerative coasting based on radar data as well.





# Reinventing how we charge.

The Kia EV6 multi-charging system operates with both 400V and 800V chargers without the need for an additional adapter. And unlike previous EVs, which only accept one-way charging, the Kia EV6 becomes your portable energy source wherever you are. So you can power any electric item you need for any inspirational journey.

In addition, the heat pump system recaptures heat waste from the motor and other electric components to reduce winter range loss by almost 19%.



**Electric Global Modular Platform (E-GMP).** The Kia EV6 is the first vehicle based on the Kia E-GMP platform. The new long-wheelbase platform is a clean slate. It introduces a flat floor, facilitating new comfort and utility choices. Its modularization permits more flexible development to secure performance, maintenance and safety objectives. Performance benefits include greater power, driving range and control, as well as shorter charging times.

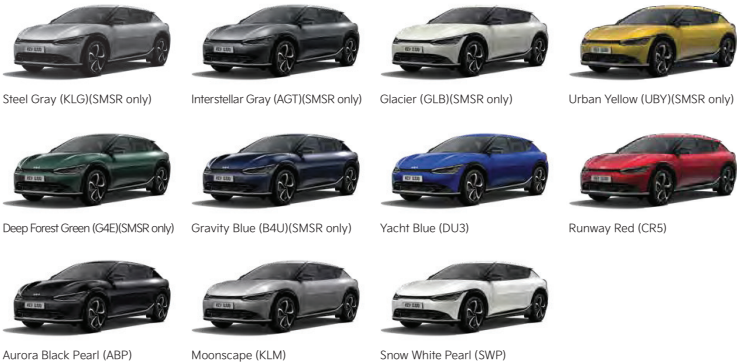
**Charging port.** The charging port door opens and shuts electronically. Just press the door itself, or the button on the left of the dash controls. Inside the cover, a bar graph displays the charging level.



# Customize your distinctive style.

The EV6 is available in a wide range of colours to fit your style, whether bold or subdued. And no matter which design you pick, the wheels not only look great but also provide added aerodynamics.

## Exterior body colours



## Wheels

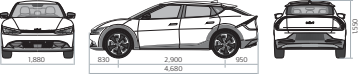


19" alloy wheel (Single Motor Standard Range)

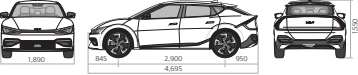


19" alloy wheel (GT-Line)

## Dimensions (mm) \_ Single Motor Standard Range



## Dimensions (mm) \_ GT-Line



## Illumination



MFR LED headlamps (Single Motor Standard Range)



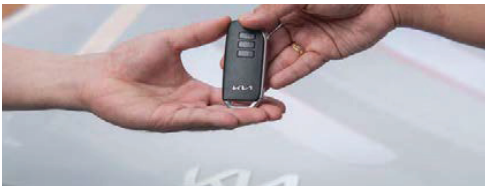
IFS LED headlamps (GT-Line)

# Cycle & Carriage Aftersales Service keeps your car in its prime.

We care for you the same way we care for our family. Experience the Cycle & Carriage Kia Service spirit as we welcome you at our Kia Authorised Service Centres.

With more than a century in the automotive industry, we can assure you that you will enjoy the most comprehensive customer support and exceptional service experience by well-trained professionals, using state-of-the-art technologies, diagnostic tools and genuine parts to keep your Kia vehicle running in peak condition. All Kia genuine parts come with 2 years or 40,000km (whichever comes first) warranty.

This is our commitment to you.



# Industry-leading warranty.

We are confident of the quality and durability of every Kia vehicle, having undergone stringent pre-delivery processes and checks before being delivered in pristine condition. We are so confident that your new Kia car will enjoy a 5-year unlimited mileage warranty and a 10-year engine warranty.

From the date of registration, your new Kia car is covered against defects in materials and workmanship for a period of 5 years of factory unlimited mileage.

On top of that, starting from 1 June 2014, your Kia car will come with a 10-year engine warranty, subject to a maximum mileage of 200,000km or 10 years, whichever is earlier. This engine warranty from Cycle & Carriage will take effect immediately after the expiry of the manufacturer's.



**Kia Service Centres**  
241 Alexandra Road  
209 Pandan Gardens  
330 Ubi Road 3  
600 Sin Ming Avenue

**Tel: 6866 1666**



# Join the movement today.

The Kia EV6 is not just another EV. Yes, it delivers beyond your expectations in terms of range, space, performance and efficiency. But we want to deliver more than that. With the Kia EV6, we create an experience that inspires you to create ideas and, ultimately, a better world.





# Created for complete peace of mind.

When you purchase a new Kia EV6, we want you to feel totally connected to your driving experience, not just today, but for years to come. That's why every new Kia comes with exclusive extended warranties.



## Movement that inspires

At Kia, we believe movement inspires ideas. Great ideas come to you when you're on the move. Whether you're walking, traveling on a train or driving. It's why we create the spaces and the time you need to bring ideas to life.

※ All information, illustrations and specifications are accurate at the time of printing and are subject to change without notice. The models and specifications shown in this brochure may vary from those available in your market. Contact your local Kia dealer for current information and full warranty details including terms and conditions.



[Kia.sg](http://Kia.sg) / [Kia.com](http://Kia.com)



[facebook.com/kia.sg](https://facebook.com/kia.sg)



[instagram.com/kia\\_sg](https://instagram.com/kia_sg)



[www.youtube.com/KiaSingapore](https://www.youtube.com/KiaSingapore)



Movement that inspires

Cycle & Carriage Kia Pte Ltd

Kia Showroom:  
239 Alexandra Road S(159930)

Tel: 6866 1666



**CYCLE & CARRIAGE**  
Exceptional Journeys