

# UX

UX250h / UX200



 **LEXUS**  
EXPERIENCE AMAZING

## DISCOVER NEW HORIZONS

Who knows what the open road will bring?  
With so much to discover, let the Lexus UX  
take you there.



Exciting spaces.  
Inspired experiences.  
Brand new adventures.

What will you find?

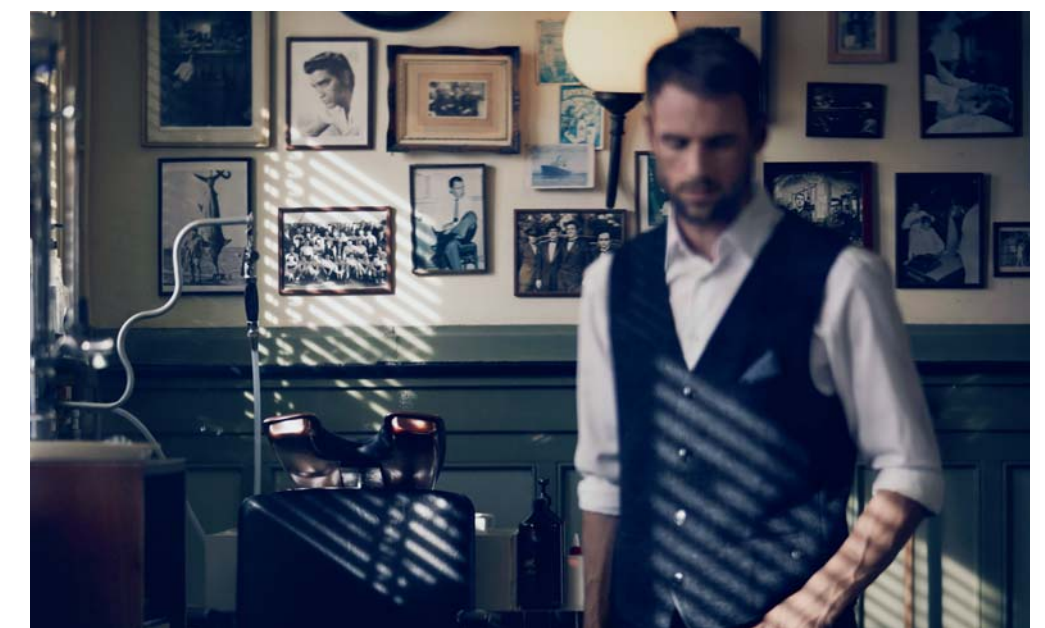




Discover a fresh  
and bold perspective  
to your city.



Where craftsmanship  
meets the city.





LEXUS

INTELLIGENCE

SIX

“ Our aim for the new UX was not to conform to the established crossover look, but to break with convention and create something more distinctive and dynamic. ”

UX CHIEF ENGINEER CHIKA KAKO





CONCEPT



Urban Explorer.  
A bold evolution of the Lexus L-finesse philosophy, the UX was conceived as a new genre crossover SUV, a synthesis of dynamic performance, security and sophisticated playfulness that proactively embraces new discoveries, new experiences.



» INTELLIGENCE







Expressively crafted for the Urban Explorer, the UX is a free-spirited urban crossover which stands out by being boldly crafted inside and out. Offering the widest field of vision in its class, the interior of the UX is inspired by traditional Japanese architecture, 'engawa' which harmonizes the boundary between the inside and outside of a house, showcasing seamless continuity. Simple yet captivating, the exterior projects strength and dynamism. Integrating innovations like the distinctive aero stabilizing blade lights with integrated rear combination lamps that fuse exceptional functionality with sophisticated design, its presence and sense of playfulness catch the eye in an urban environment. The driver-oriented interior blends ergonomics with design to create a refined space that is securely snug, yet open and inviting.

The UX's functionality extends to the blend of elegant performance with peace of mind. Based on the advanced Lexus GA-C platform, its outstanding rigidity and low center of gravity provide the foundation for dynamic performance. Together with an engine that delivers exciting driving with exceptional fuel economy, refined suspension and innovative aerodynamics, the UX realizes agile exhilarating performance. In the cabin, it is expressed in the imaginative technology and advanced features that surprise and delight, including wireless vent control illumination and advanced active safety technologies that enhance peace of mind.





**DESIGN**



Distinctively designed for the Urban Explorer, the eye-catching styling with bold design exudes a futuristic presence. The seamless integration of both exterior and interior creates a feeling of spacious unity, designed for a heightened experience of pleasure and satisfaction.



» INTELLIGENCE





## EXTERIOR

Bolder and more dynamic, the exterior flows from the distinctive Lexus signature grille into the three-dimensional forms of the fenders flaring out from the cabin centre, expressing a powerful driving performance with a sleek-yet-bold aerodynamic design.



## INTERIOR

The human-centered interior blends ergonomics with design in the cockpit that provides a secure feeling whilst providing an artistic design. Interior trims inspired by the grain pattern of Japanese hand-made paper known as 'washi', help create a mood of calm and warmth. The theme continues with 'sashiko quilting', a technique used to strengthen the durability of the material, whilst maintaining its comfort.





PERFORMANCE

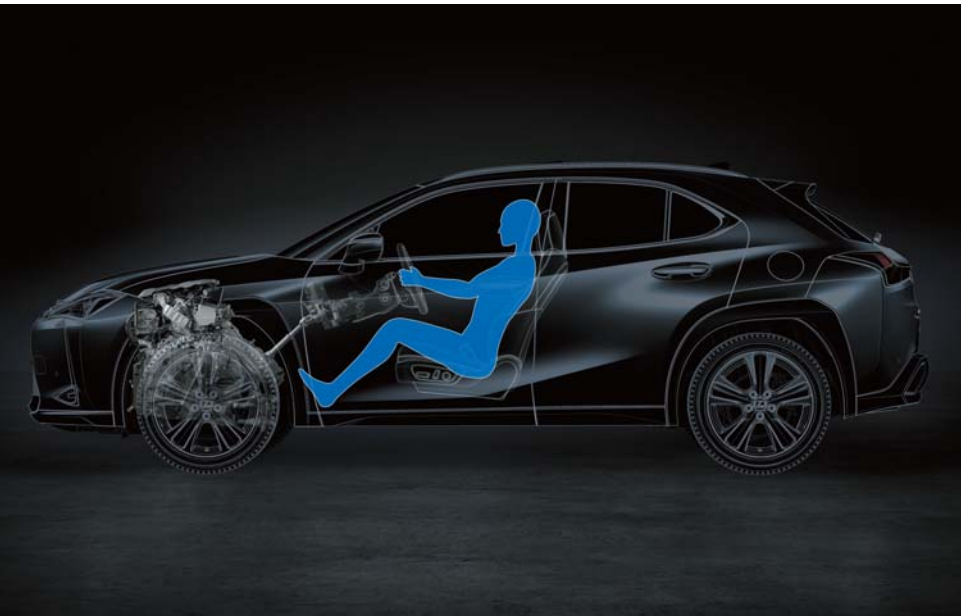


A dynamic expression of the Lexus performance philosophy, the advanced platform, low centre-of-gravity and advanced aerodynamics all come together for a more refined and stable ride.



» INTELLIGENCE





#### GA-C (Global Architecture-C) platform

The advanced Lexus GA-C platform forms the backbone of the UX, providing the foundation for the core elements of its dynamic performance: accelerating, cornering and braking. Combining excellent rigidity and a low center of gravity, it endows the UX with the sharp response and maneuverability of a passenger car enjoyed in the exceptional linear stability, fast stable cornering, and pleasing acceleration, together with excellent ride comfort and the security of peace of mind.

#### Multi material body

To create a strong yet light body, hot-stamp and high-tensile steel were used in key body components including the underbody, together with aluminum for the hood and side doors, and resin for the back door. Reinforcements around the outer side and back doors that connect the squared reinforced annular structures and the extensive use of technologies including laser screw welding and structural body adhesive further enhance rigidity, contributing to agile handling and excellent steering response and feedback.



#### Aerodynamics

In the pursuit of outstanding aerodynamic performance, the UX combines bold design with advanced aerodynamic performance. It drove developments in aerodynamics including the innovative aero stabilizing arch moldings, and aero stabilizing blade lights with integrated rear combination lamps. Blending form with function, the front and rear fenders feature aero stabilizing arch moldings with a distinctive rounded front section, squared rear section and flat upper surface that help to suppress unstable vehicle behavior, enhancing roll stability while cornering. The eye-catching aero stabilizing blade lights feature vertical fins on the outer edges which smooth airflow over the back surface, contributing to excellent rear stability while cornering, as well as enhancing stability in high speed driving in side winds. In addition, aerodynamic enhancements to the upper body include the shape of the front pillar and a wing type rear spoiler, and to the flat underbody structure that accelerates air flow under the vehicle.





#### 2.0-liter 4-cylinder engine (M20A-FKS)

The advanced 2.0-liter inline 4-cylinder engine generates a sophisticated blend of powerful performance with exceptional fuel efficiency and environmental friendliness. The engine's basic design was refined to boost thermal efficiency and power output while reducing both weight and size. It utilizes high-speed combustion technology featuring a long stroke, high-efficiency intake and exhaust ports, and multi-hole direct injectors. Additional refinements including a continuously variable-capacity oil pump, a variable cooling system, and VVT-iE on the intake-side valves, contribute to the exceptional performance and fuel efficiency.\*

#### Direct Shift-CVT

The Direct Shift-CVT delivers the smooth and fuel-efficient driving of a conventional CVT, with a direct and strong launch acceleration feel using an additional launch gear. A wide gear ratio range and linear acceleration feeling contribute to driving pleasure, achieved by synchronizing the engine speed and vehicle speed with the driver's operation. In conjunction with drive mode control, it realizes responsive performance to suit various driving styles, from smooth driving with excellent fuel economy to sporty driving with fast shifting.



#### Hybrid System

The Hybrid System was developed to deliver outstanding fuel economy together with linear acceleration for an exhilarating driving feel that enhances the driving pleasure of a Lexus hybrid crossover. The combination of a highly-responsive engine, efficient hybrid control system and enhanced battery performance provides exhilarating driving with high-speed responsiveness and a feeling of smooth, natural acceleration, so the UX250h moves in tune with the driver's expectations.

Key to the Hybrid System's development was a focus on creating compact lightweight components to fulfill the promise of economical yet exhilarating driving. The brain of the Lexus Hybrid Drive, the power control unit optimizes control of DC electricity from the battery and AC electricity for driving the motor and generator. The Ni-MH battery optimizes the battery layout and adopts a compact cooling system to enable the ample luggage space, as well as helping to optimize the low center of gravity.

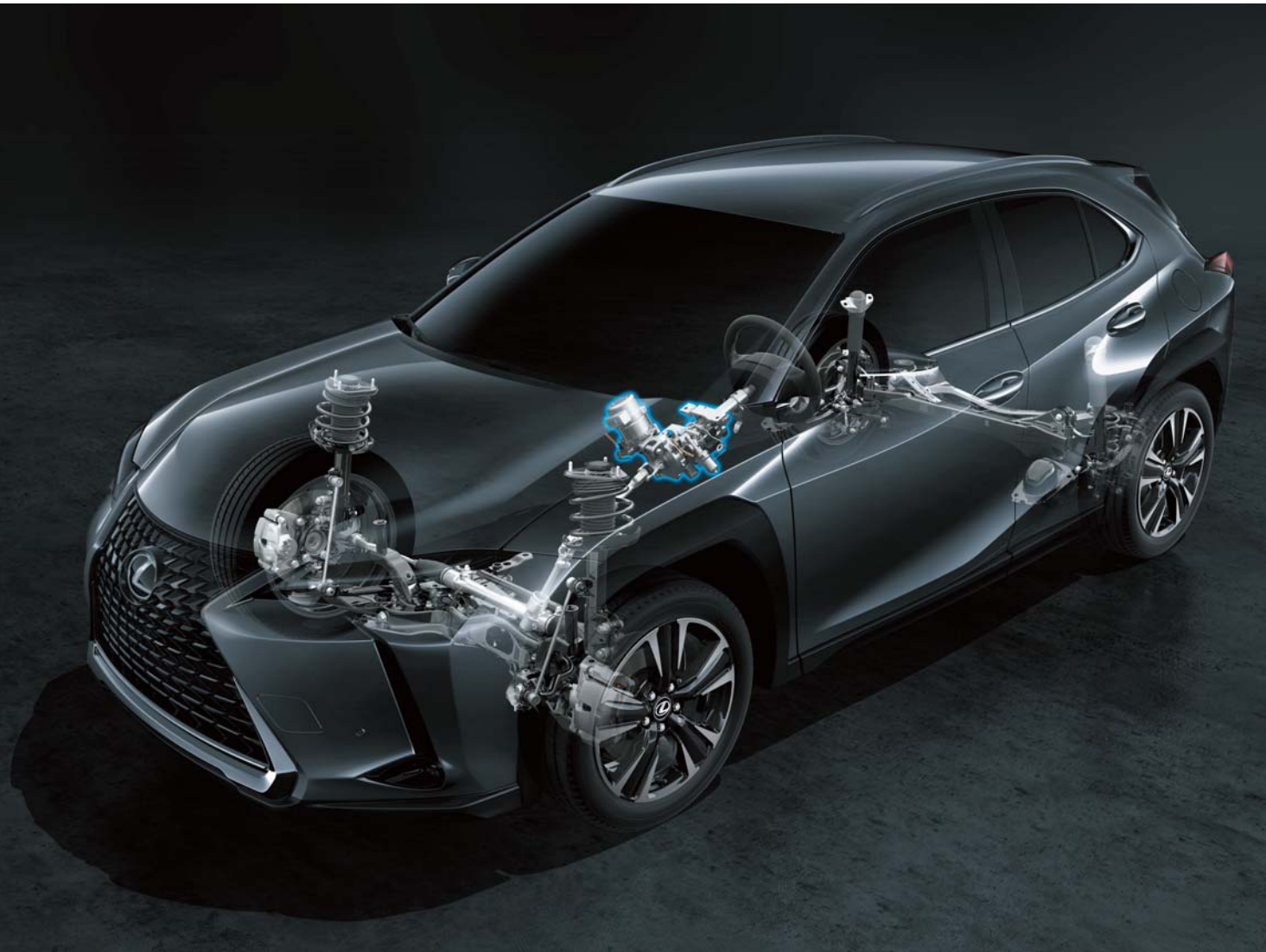
#### 2.0-liter 4-cylinder engine (M20A-FXS)

The advanced 2.0-liter inline 4-cylinder engine utilizes high-speed combustion technology to deliver powerful performance together with exceptional fuel efficiency and environmental friendliness. The amount of motor assist and engine rpm were optimized to deliver a linear acceleration feeling, with the engine speed synchronized with increasing vehicle speed to deliver an immediate and continuous acceleration feeling.



\* VVT-iE: Variable Valve Timing-intelligent by Electric motor.





#### EPS (Electric Power Steering)

Featuring a compact and highly rigid format, the column assist-type EPS delivers the sharp response expected of a Lexus. Adopting a large column shaft enhanced torsional rigidity, boosting both steering response and easy operation, contributing to responsive handling that instantly and crisply responds to driver inputs with a smooth and sure steering feel.



#### Suspension

The MacPherson strut front suspension and double-wishbone rear suspension deliver excellent steering response together with premium ride comfort. They were fine-tuned specifically for the UX in keeping with the 'clear and deep feel' performance philosophy, and driven hard in testing on a race circuit to deliver reliable response and handling even at the limits. Careful attention paid to the shock absorbers, including refining the damper oil, oil seals and FCD (Friction Control Device), also enhance the ability to absorb vibrations transmitted from the road surface to provide a flat, comfortable ride.

#### Drive mode select

Drive mode select provides integrated control of multiple systems including the engine and CVT to let you tune performance to suit your driving style. You can select and change between three modes: Eco for fuel efficient driving; Normal for balanced driving performance with fuel efficiency; and Sport for sporty driving with enhanced steering feel and acceleration response.



#### Brakes

Engineered for excellent braking force, control and response, the brakes provide intuitive response to the driver's input, feeding driving pleasure by supporting exciting driving with peace of mind.



FEATURES



The integration of visionary technology gives expression to the UX's unique, future-focused identity. With the sharpest turning radius in its class enhanced with aerodynamic stabilizers, you can be ready to command any bump or turn that life springs at you.



» INTELLIGENCE





### Imaginative technology

From the design of the exterior of its iconic spindle grille through to the innovative aero stabilizing blade lights, every feature blends inspired form with thoughtful function.



### Bi-Beam LED headlamps

The ultra-compact Bi-Beam LED headlamps combine a beautiful distinctive design with exceptional light distribution. The Lexus signature L-shaped DRL (Daytime Running Lamps) set above the headlamps feature distinctive vertical illumination lines that enhance the feeling of depth.

### LED rear combination lamps

The bold design of the rear combination lamps reinforces the UX's unique identity. The left and right lamps are connected by the aero stabilizing blade lights to form a single line of light across the rear, illuminated by 120 LEDs. This form is complemented by the advanced aerodynamics of the L-shaped race car-inspired fins, which contribute to excellent rear stability while cornering and in side winds.



### Forward visibility

A key focus of the human-centered design was forward visibility, with the aim of providing a commanding view and peace of mind. Special attention was given to the design of the front pillars and door mirror area, creating a space between the pillar and mirror to enhance the visibility of pedestrians and bicycles at intersections.



### Power back door

Even if both hands are full, when carrying the Electronic Key you can open and close the back door automatically by moving your foot under the rear bumper and out again.

### Rear bumper

Combining high rigidity with excellent recyclability, the rear bumper accentuates the dynamic SUV presence of the rear design, endowing it with a strong sense of stability. Back-up lamps are integrated into the lower section.





#### Meters/EMV display

Realizing the 'Seat in Control' concept of the human-centered interior, the displays are designed to provide the driver with an intuitive interface that provides clear information without changing posture or line of sight. The 10.3-inch EMV (Electro Multi-Vision) displays incoming hands-free mobile calls, audio system and other information, and coordinates the display of select information with the multi-information display integrated into the 7-inch color TFT (Thin Film Transistor) Optitron meter, and the large color head-up display positioned in the driver's line of sight. The drive mode select switch is conveniently located on the meter hood bezel.

#### Color head-up display

The wide, color head-up display projects a range of frequently checked information on the lower windshield glass in the driver's line of sight, including the current speed, tachometer, audio system, and more.



#### Remote Touch Interface

The interface is designed for smartphone-style operation. A smooth touch pad surface allows the finger to easily slide over, while the cursor can be adjusted to suit the user's preferences. Pinch-in and pinch-out operation enables continuous in and out zooming.

#### Audio switches

Blending sophisticated design with ease of use, remote switches to control the audio system are integrated into the base of the palm rest. The layout and number of switches are arranged for intuitive control of frequently-used functions by the hand resting on the palm rest, without changing posture or line of sight.



#### Air conditioning vent knob

An imaginative approach to technology drove the development of a single easy-to-use air conditioning vent knob that controls both air direction and volume. The integration of wireless LED lighting into the knob makes it easy to use at night, and projects a futuristic sophistication with its sense of depth.



#### Wireless charger

This thoughtful charging tray in the center console enables wireless charging of batteries in Qi-compatible smartphones and electronic devices simply by placing them on the charger tray.



#### Console box

The lid on the large capacity console box opens to both the left and right, for easy access by the driver and front seat passenger. The length of the armrest was optimized to provide comfort and support, with controls for the frequently-used audio system functions integrated into the front palm rest.



#### USB ports/mini-jack/power outlet

Two USB ports and a mini-jack integrated inside the center console box support the plug-and-play use of music players, and enable the connection and charging of various devices and portable gear. Additional power outlets are located in the front tray and the side of the luggage space, and two USB ports in the rear of the center console.

#### Rear armrest

A thoughtful strap makes it easy to fold out the armrest in the center of the rear seats to provide added comfort and support. It also holds two convenient cupholders integrated in front.



#### Lexus Climate Concierge

The Lexus Climate Concierge realizes a human-centered approach to personalized comfort. It automatically controls the cabin temperature, including individual temperature controls and the Ventilated Seats for the front seats to optimize the comfort of each occupant. It also provides one-touch control of all heating systems in the cabin.



#### Luggage space

Supporting an active lifestyle, the ample luggage space highlights the practical convenience of the packaging and thoughtful design. For longer items and larger loads, the 60/40 split rear seatbacks fold down to create various passenger and luggage configurations.

**SAFETY**



The UX's elegant driving performance relies on active and passive safety measures that utilize advanced technologies for a deeper peace of mind. So you command the freedom to chase every horizon.



» INTELLIGENCE





LEXUS SAFETY SYSTEM +



**LDA (Lane Departure Alert)**

When Lane Departure Alert is activated, it alerts the driver of possible lane or road deviations and helps assist steering to avoid them. In addition, while driving on highways and automobile-only roads with Dynamic Radar Cruise Control (with high speed range) activated, it helps assist steering to keep the vehicle in the lane.



**Dynamic Radar Cruise Control**

In addition to maintaining a constant speed, Dynamic Radar Cruise Control uses the millimeter-wave radar and camera sensors to detect a vehicle driving ahead and maintain an appropriate distance between vehicles.

**Pre-Collision System**

When the millimeter-wave radar and monocular camera sensors detect a vehicle ahead, a pedestrian during the day or at night, or a cyclist during the day\*<sup>1</sup> and determine that a collision is likely, it alerts the driver and activates pre-collision brake assist when the driver depresses the brake pedal. If the driver cannot depress the brake pedal, it activates the pre-collision brake to help avoid a collision or mitigate the impact force.



**AHB (Automatic High-Beam System)**

Alternating between high beam and low beam is an essential part of night-time driving, but with Automatic High Beam, you can drive conscientiously without compromising on visibility. AHB responds to the headlights of other drivers and dips automatically when needed, before restoring high beam when the road is clear.



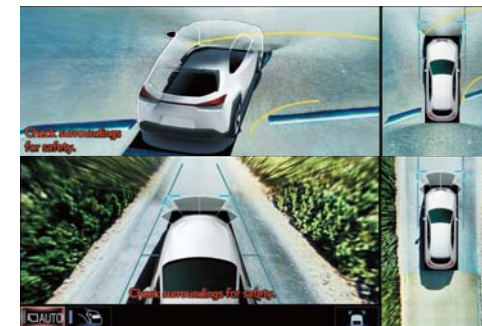
**Rear Cross Traffic Alert (RCTA)**

When backing out of a parking space, the backup camera displays your rear view on the multimedia display and the Rear Cross-Traffic Alert alerts you of vehicles approaching from either side.



**Blind Spot Monitor System**

When the quasi-millimeter-wave radars in the rear bumper detect vehicles in adjacent lanes that aren't visible in the door mirrors, the system activates an LED warning indicator in the relevant door mirror the moment a vehicle enters this blind spot.



**Panoramic View Monitor**

To help check areas surrounding the vehicle that are difficult to see from the driver's seat, the system shows a bird's-eye view of the vehicle in real time on the 10.3-inch EMV display, using a composite image taken by cameras mounted on the front, sides, and rear of the vehicle.\*<sup>1</sup>



**SRS (Supplemental Restraint System) airbags**

The UX features dual-stage SRS airbags (Front seats), SRS knee airbags (Front seats), SRS side airbags (Front seats) and SRS curtain shield airbags (Front and rear seats).\*<sup>2</sup>

\*<sup>1</sup>The area the cameras can show is limited. Be sure to visually check your surroundings before you proceed.

\*<sup>2</sup>The SRS airbags are supplemental devices to be used with the seatbelts. The driver and all passengers in the vehicle must wear their seatbelts properly at all times. Never install a rear-facing CRS (Child Restraint System) on the front passenger's seat. For a forward-facing CRS, it is recommended you use it in the rear seats. Please do not use accessories for the seats which cover the parts where the SRS side airbags should inflate. Such accessories may prevent the SRS side airbags from activating correctly, causing serious injury (Lexus genuine seat covers are specifically designed for models equipped with the SRS side airbags. To find out about availability in your area, please inquire at your local dealer). The photo shows all the SRS airbags activated for display purposes only (the SRS side and curtain shield airbags only inflate on the side of the collision in an actual accident). For details on these and other important safety features, be sure to read the Owner's Manual carefully.

Note: The systems functions may not operate properly depending on the weather, road and vehicle conditions or other factors. Be sure to read the Owner's Manual carefully. Do not overly rely on these systems, as there is a limit to the performance they can provide. The driver is always responsible for paying attention to the vehicle's surroundings and driving safely. Vehicles pictured and specifications detailed in this catalog may vary from models and equipment available in your area. Please inquire at your local dealer for details on the availability of features.

EXTERIOR & INTERIOR  
COLORS

*The concept behind the captivating colors for the UX is 'Toughness yet Luxury,' expressing the toughness of a crossover and the luxury of Lexus-style textures. A fresh and contemporary palette of exterior and interior colors is complemented by the unique textures and premium quality of the upholstery and trim.*



Sonic Quartz <085>



Platinum Silver Metallic <1J4>



Mercury Grey Mica <1H9>



Black <212>



Sonic Titanium <1J7>



Madder Red <3T2>



Graphite Black Glass Flake <223>



Amber Crystal Shine <4X2>



Blazing Carnelian Contrast Layering <4Y1>



Terrane Khaki Mica Metallic <6X4>



Celestial Blue Glass Flake <8Y6>



18-inch aluminum wheels,  
dark gray metallic



<SMOOTH LEATHER>



Cobalt



White Ash



Rich Cream



Black Ocher



Black

<SYNTHETIC LEATHER (VISCOTECS)>



Cobalt



White Ash



Rich Cream

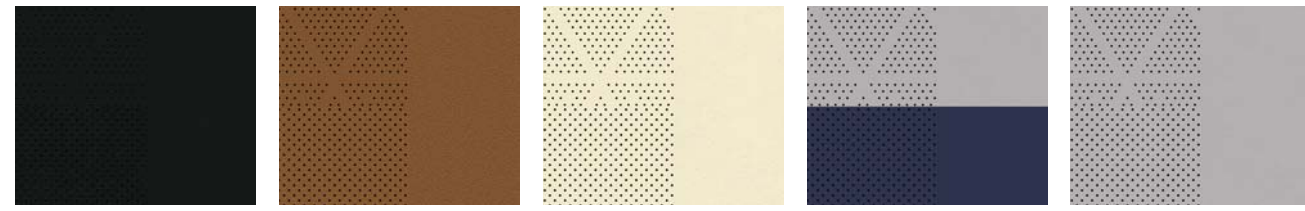


Black Ocher



Black

<SMOOTH LEATHER>



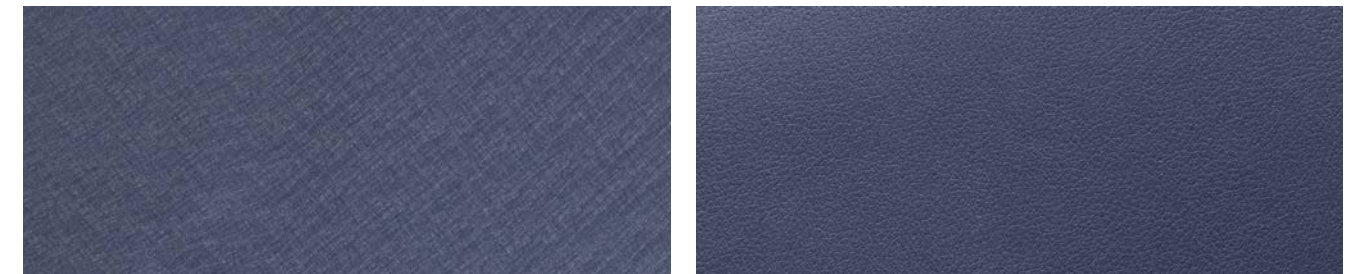
Black Ocher Rich Cream Cobalt White Ash

<SYNTHETIC LEATHER (VISCOTECS)>

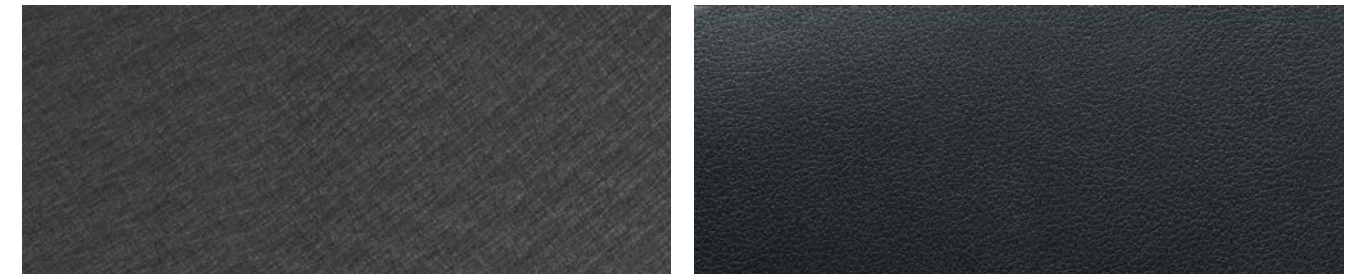


Black Ocher Rich Cream Cobalt White Ash

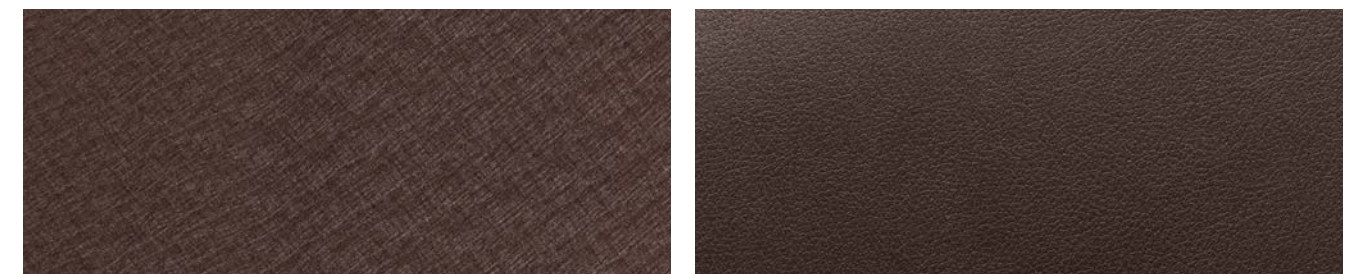
<TRIM>



Washi (Japanese paper grain)/Blue High feel/Blue



Washi (Japanese paper grain)/Black High feel/Black



Washi (Japanese paper grain)/Noble Brown High feel/Noble Brown

SEATING MATERIAL	INTERIOR COLORS				
	Black	Ocher	Rich Cream	Cobalt	White Ash
Smooth Leather (Sashiko-style stitch)	●	●	●	●	●
Synthetic Leather <Viscotecs>	●	●	●	●	●

TRIM	INTERIOR COLORS				
	Black	Ocher	Rich Cream	Cobalt	White Ash
Washi (Japanese paper grain)	●	●	●	●	●
High feel	●	●	●	●	●

● : Available combination.

## SPECIFICATIONS

ENGINE	UX200	UX 250 H
Type	In-line 4, 16-Valve DOHC, VVT-iE (intake), VVT-i (exhaust)	
Drive	Front-wheel Drive	
Transmission Type	10-speed Direct Shift CVT	E-CVT
Bore x Stroke	80.5 x 97.6 mm	
Displacement	1,987 cc	
Compression Ratio	13.0	14.0
Max. Output (Combined)	228kW (170 bhp) / 6,600rpm	191kW (143 bhp) / 6,000rpm
Max. Torque	204 Nm / 4,400 rpm	188 Nm / 4,400 - 5,200 rpm
Max. Speed	190 km/h	177 km/h
Acceleration (0-100 km/h)	9.2 sec	8.5 sec
Fuel Consumption	5.8 L / 100km [17.2 km/L]	4.5 L / 100km [22.2km/L]
Carbon Emissions	132 g/km	103 g/km
VES Banding	B	A2
UX 250H MOTOR AND BATTERY		
Motor Type	AC Permanent Magnet Motor	
Max. Output	80kW (107 bhp)	
Max. Torque	202 Nm	
Battery Type	Ni-MH	
Number of Battery Cells	180	
Total System Power Output (Engine + Motor)	181 hp	
CHASSIS		
Brake (Front)	Ventilated Disc Brake	
Brake (Rear)	Solid Disc	
Suspension (Front)	MacPherson Strut	
Suspension (Rear)	Double Wishbone	
Steering System	Electric Power Steering	
MEASUREMENTS		
Length	4,495 mm	
Width (with mirrors)	1,840 mm	
Height	1,520 mm	
Wheelbase	2,640 mm	
Tread (Front)	1,550 mm	
Tread (Rear)	1,550 mm	
Min. Turning Radius (Tyre)	5.2 m	
Kerb Weight	1,485 - 1,570 kg	
Gross Vehicle Weight	1,980kg	2,110kg
Boot Capacity	271 L	264 L
Fuel Tank Capacity	47 L	43 L



## FEATURES

	UX 200		UX 250h	
	EXECUTIVE	LUXURY	EXECUTIVE	LUXURY
ULTIMATE COMFORT				
Ambient Illumination	•	with LED Knob	•	with LED Knob
Electrically Adjustable Steering Wheel	•	With Memory	•	With Memory
Climate Concierge	•	•	•	•
Original Factory Fitted Seats	Viscotecs	Smooth Leather	Viscotecs	Smooth Leather
Power Adjustable Front Seats	8-way (D+P)	8-way (D+P)	8-way (D+P)	8-way (D+P)
2-way Electric Seat Lumber Support (D)	•	•	•	•
Memory Seats	—	D	—	D
Climate Seats	Heater	Heater + Ventilation	Heater	Heater + Ventilation
Dual-Zone Independent Climate Control	•	•	•	•
Nano-E Minus Ion Generator	—	—	•	•
EQUIPMENT & TECHNOLOGY				
Bi-LED Headlamps	•	•	•	•
LED Daytime Running Lights	•	•	•	•
LED Front & Rear Fog Lamps	•	•	•	•
Auto-Leveling	•	•	•	•
SMART Keyless GO	•	•	•	•
Auto Rain Sensor	•	•	•	•
Drive Mode Select (Eco/Normal/Sport)	3	3	3	3
Head Up Display	•	•	•	•
New Generation Lexus Remote Touch Interface	•	•	•	•
Roof Rails	•	•	•	•
Electro Chromic (EC) Rear View Mirror	—	•	—	•
Wireless Charger	•	•	•	•
Power Trunk Lid and Easy Closer with Kick Sensor	•	•	•	•
7" Digital Speedometer and Multi-Information Display	•	•	•	•
Electrical Retractable Side Mirrors	•	•	•	•
AUDIO & ENTERTAINMENT				
USB/iPod Playback Function	•	•	•	•
AM/FM Tuner, DVD Player	•	•	•	•
Bluetooth Connectivity	•	•	•	•
10.3" EMV with Integrated Navigation System	•	•	•	•
Lexus Premium Audio System with 8 Speakers	•	•	•	•
360° PROTECTION				
Lexus Safety System+ (DRCC, PCS, LDA)	With AHB	With AHB	With AHB	With AHB
8 SRS Airbags	•	•	•	•
Hill Start Assist	•	•	•	•
Vehicle Stability Control (VSC)	•	•	•	•
Anti-Lock Brake System (ABS)	•	•	•	•
Traction Control System (TCS)	•	•	•	•
Lexus Parking Assist System (8 sensors)	•	•	•	•
Rear View Camera with Back Guide Monitor	•	—	•	—
Panoramic View Monitor	—	•	—	•
Blind Spot Monitor with RCTA	—	•	—	•
Auto-Location Tyre Pressure Warning System	•	•	•	•
Child Restraint System (ISOFIX)	•	•	•	•
RIMS & TYRES				
Bridgestone 225/50RF18 Dark Gray Metallic Wheels with Machined Finished Run Flat Tyres	•	•	•	•



**BORNEO MOTORS (SINGAPORE) PTE LTD** | 33 LENG KEE ROAD SINGAPORE 159102 TEL: 66-31-1388 EMAIL: CR@INCHCAPE.COM.SG

**LEXUS BOUTIQUE** | MON-FRI: 9AM TO 6PM SAT: 9AM TO 7PM SUNDAY & PUBLIC HOLIDAYS: 10AM TO 6PM

**LEXUS SERVICE CENTRE** | MON-FRI: 8AM TO 5PM SAT: 8AM TO 12PM CLOSED ON SUNDAY & PUBLIC HOLIDAYS

**[WWW.LEXUS.COM.SG](http://WWW.LEXUS.COM.SG)**