



TOYOTA

ALWAYS BETTER.




Borneo Motors

TOYOTA WORLD

toyota.com.sg

33 Leng Kee Rd, Singapore 159102
17 Ubi Rd 4, Singapore 408611

Monday - Friday: 9.00am - 6.00pm
Saturday: 9.00am - 7.00pm
Sunday/Public Holiday: 10.00am - 6.00pm
T 6631 1188

 ToyotaSingapore



PRIUS +

MORE THAN YOU WISHED FOR



Borneo Motors

TOYOTA WORLD
toyota.com.sg

33 Leng Kee Rd, Singapore 159102 | 17 Ubi Rd 4, Singapore 408611 | T 6631 1188
Monday - Friday: 9.00am - 6.00pm, Saturday: 9.00am - 7.00pm, Sunday/Public Holiday: 10.00am - 6.00pm

**+ INFINITE POSSIBILITIES
TO EVERY ADVENTURE
THE PRIUS+**

**+ SAVE FUEL AND SEAT SEVEN.
THAT'S A PLUS.**



+ STREAMLINED OUTSIDE. VERSATILE INSIDE.

EFFICIENT TECHNOLOGY, SPACIOUS INTERIOR AND CLASS-LEADING INNOVATION.

DYNAMIC DESIGN

- Aerodynamic shape
- Front fog lamps
- LED Daytime Running Lights
- LED front and rear headlamps
- Power retractable wing mirrors
- 16-inch alloy rims

EFFICIENT & SAFE

- All-new lithium-ion hybrid battery
- 7 SRS airbags
- Emergency Stop Signal
- Vehicle Stability Control (VSC)
- Anti-lock Braking System (ABS)
- Electronic Brake-force Distribution (EBD)
- Hill-Start Assist (HSA)

VERSATILE INTERIOR

- 7-seater with 6 different seating configurations
- Huge luggage space (up to 1085 litres)
- Smart Entry & Start System
- Driver seat lumbar support
- Ample room for passengers
- Electrochromic Rear View mirror
- Interactive Multi-Information Display
- Cruise control
- Multi-function steering wheel

+ STYLED TO SUIT YOUR ADVENTURES

Stand out with distinctive looks for aerodynamic efficiency.



+ LED HEADLAMPS ENERGY EFFICIENT ILLUMINATION

LED headlamps efficiently light your path, providing brighter illumination while requiring less energy to improve fuel efficiency.



+ 16" RIMS LIGHT AND SPORTY

Lightweight low resistance rims reduce the overall weight for greater fuel efficiency, giving the Prius+ a sporty and refined appearance.



+ DAYTIME RUNNING LIGHTS BE SEEN ALL DAY

Low energy consumption Daytime Running Lights enhance the vehicle's visibility to other motorists and pedestrians to lower the risk of accidents.



+ AERODYNAMIC EXTERIOR STREAMLINED SHAPE

The exterior is aerodynamically shaped to reduce airflow drag across the body to improve fuel efficiency and enhance performance, while maintaining distinctively stylish looks.



+ FLAT LUGGAGE SPACE GREATER VERSATILITY

Fold the third row seats to create a flatbed space of 505-litres. Collapse the second row for a massive 1085-litre capacity.



+ LED REAR COMBINATION LIGHTS FOLLOW CLEARLY

LED Rear Combination Lights provide excellent vehicle visibility in low-light conditions to minimise the risk of rear-end collisions and indicate your movements to other drivers.

+ CRUISE IN CONVENIENT COMFORT

A stylish and ergonomic interior that makes every journey a joy.



+ SMART ENTRY & START SYSTEMS

GO AT A TOUCH

Keyless technology and button ignition allow for easy travel without searching for keys.



+ STEERING WHEEL SWITCH CONTROLS

ALL AT YOUR FINGERTIPS

Stay in control with multi-function switches ergonomically built into the steering wheel.



+ TOYOTA TELEMATICS SYSTEM

STAY CONNECTED

Seamlessly connect your mobile device to the car. An advanced touch screen system allows you to access music and answer phone calls.



+ DRIVE MODE SWITCHES

CHANGE IT UP

Switch between electric and hybrid drive seamlessly to get the most out of every journey.



+ STORAGE COMPARTMENTS

A PLACE FOR EVERYTHING

Handy interior compartments allow you to keep your belongings organised and out of the way.



+ CRUISE CONTROL

SET YOUR OWN SPEED

Set your speed, sit back, relax and let the Prius+ handle the drive.



+ CUP HOLDERS

SPACE TO REFUEL

Retractable cup holders slide out to provide a convenient space to store your drinks for long drives.



+ ELECTROCHROMIC REAR VIEW MIRROR

ALL CLEAR BEHIND

A rear view mirror that automatically adjusts for headlight glare from vehicles behind you.

+ VERSATILE COMBINATIONS

Seats seven in six different configurations.



+ FROM TWO SEATS TO SEVEN

The Prius+ provides multiple seating configurations and loading possibilities.



GENEROUS BOOT CAPACITY

Even with seven people, generous boot space allows adequate storage capacity for all the essentials of every adventure.



FLEXIBLE SEATING ARRANGEMENTS

Six different versatile seating configurations ensure there's always a way to fit in the whole family.



LUGGAGE SPACE FOR THE WHOLE FAMILY

Third row seats can be folded down to provide a huge flatbed capacity of 505 litres. That's enough luggage space for the whole family.

+ INTELLIGENT DISPLAY

A smarter car, a more intuitive drive



+ FULL COLOUR DISPLAY AND ENERGY-MONITORING SYSTEM

COMPREHENSIVE DRIVING OVERVIEW

4.2" TFT Multi-Information Display (MID) and energy-monitoring system enables optimisation of fuel efficiency through a better understanding of driving style.



+ ECO SCORING

INFORMATION IN AN INSTANT

Real-time feedback of driving efficiency during start, stop and cruise to help monitor and improve fuel efficiency performance.

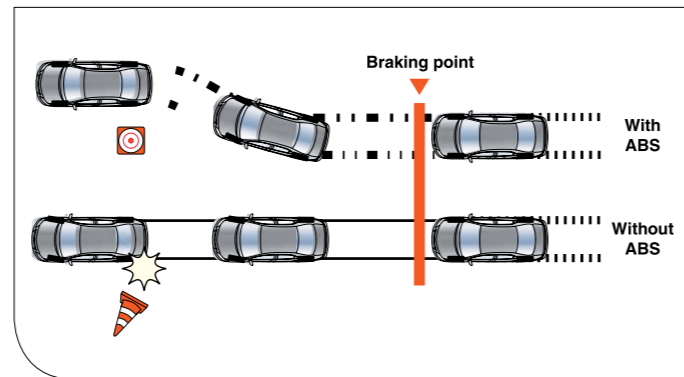
+ DRIVE INFORMATION

TRIP SUMMARY

Displays trip summary, mileage and drive time data at a glance.

+ SAFETY FEATURES

Drive better with intelligent safeguards



+ 7 SRS AIRBAGS

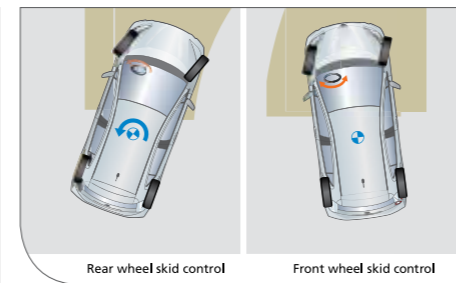
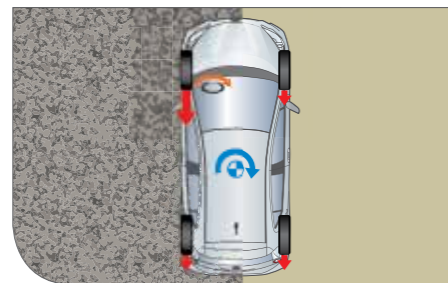
ALL-ROUND PROTECTION

7 SRS Airbags are fitted throughout the cabin provide 360° protection from severe frontal or side collisions (driver and passenger, side, curtains and driver's knees).

+ ANTI-LOCK BRAKING SYSTEM (ABS)

SLOW DOWN SAFELY

ABS prevents brakes from locking up and the car from skidding during an emergency stop.



+ HILL START ASSIST CONTROL (HAC)

STEEP INCLINE SUPPORT

HAC minimises vehicle roll-back by controlling the brake fluid pressure when the brake is released on steep inclines.

+ TRACTION CONTROL (TRC)

GET A BETTER GRIP

TRC prevents loss of wheel traction, thus maintaining control of the vehicle when excessive torque is applied in slippery road conditions.

+ VEHICLE STABILITY CONTROL (VSC)

STAY STABLE

VSC ensures vehicle stability by automatically controlling engine output and brakes on each wheel during over-steer and under-steer situations.

+ YOUR IDEAL PARTNER FOR THE CITY

Improved driving efficiency from the all-new lithium-ion battery

This is reliability you can trust. Toyota's world-leading Hybrid Synergy Drive (HSD) seamlessly integrates an electric motor and a petrol engine to offer high mileage, low emissions and a smooth, quiet driving experience. It is perfect for Singapore's city roads with frequent start/stops and low speeds. When coasting or braking, the electric motor generates energy to recharge the battery.



HYBRID SYNERGY DRIVE

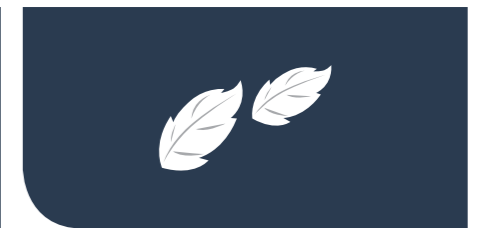
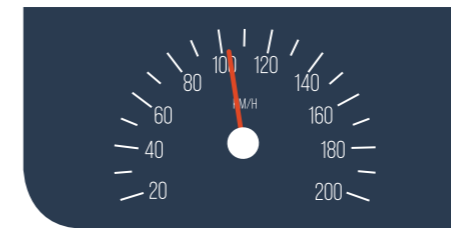
The series parallel Hybrid Synergy Drive uses a separate electric motor and generator, allowing electricity to be generated even when the motor is helping to propel the vehicle. The generator can even power the Prius+ if necessary.

HYBRID SYSTEM INDICATOR

The informative Hybrid System Indicator can show you how efficiently you're driving and help you get the most out of your vehicle's remarkable fuel efficiency.

EV/ECO/POWER MODES

Prius+ offers different modes for different types of driving. ECO mode helps minimise fuel economy. EV mode runs solely on battery power and POWER mode increases gas pedal response for enhanced acceleration.



THE ART OF SEAMLESS ADVANCEMENT

Accelerate from 0 to 100km/h in 11.3 seconds and enjoy an unbelievably smooth and quiet journey.

CLASS LEADING FUEL EFFICIENCY

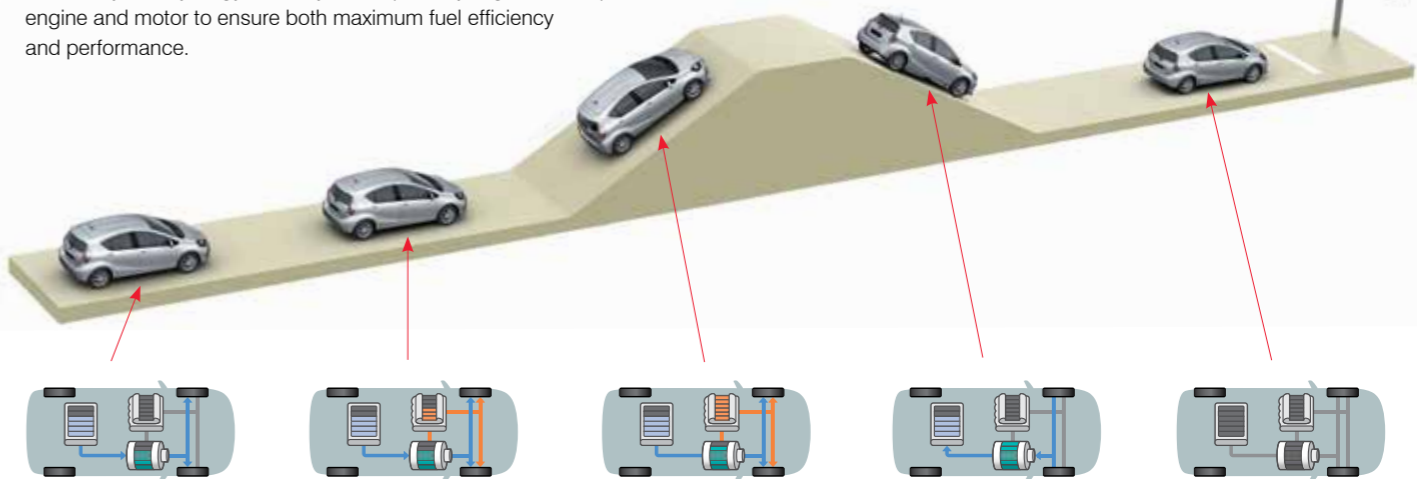
Extend mileage up to 120km or more on a full tank. Compared to a regular petrol vehicle*, the Prius+ allows you to explore and do more.

LOW CO₂ EMISSIONS

The Prius+ produces up to 1 tonne less CO₂ per year at 105g/km. When in electric EV-mode, the Prius+ can travel up to 50km/h without producing any emissions.

HOW THE HYBRID SYNERGY DRIVE SYSTEM WORKS

Prius+ Hybrid Synergy Drive system optimally regulates output from the engine and motor to ensure both maximum fuel efficiency and performance.



STARTING

When you step on the accelerator, the vehicle begins moving smoothly and quietly, powered only by the electric motor.^{*1}

NORMAL DRIVING

Motor and engine output are regulated to achieve optimum driving and battery-charging efficiency. Under low-load conditions, driving on electric power only is also possible.^{*1}

ACCELERATING

In addition to the gasoline engine, the electric motor is also used to boost power and ensure smooth, confident acceleration.

DECELERATING

The rotation of the wheels is used to drive the motor, causing it to function as a generator that efficiently captures the kinetic energy of deceleration and uses it to charge the battery.

STOPPED

When the vehicle comes to a stop, the engine and motor both stop; no fuel is consumed.^{*2}

* : As compared to a regular MPV.

*1: Gasoline engine power may also be used in some cases.

*2: If battery power is low when the vehicle comes to a stop, the engine will keep running to drive the generator motor that charges the battery, no external power is required for charging.

SPECIFICATIONS

DIMENSIONS & WEIGHTS

Overall Length / Width / Height	mm	4,645 / 1,775 / 1,575
Wheelbase	mm	2,780
Ground Clearance	mm	145
Turning Radius	m	5.5
Kerb Weight	kg	1,570
Gross Vehicle Weight	kg	2,115

ENGINE

Engine Type		4 cylinders, in-line, 16-valve DOHC with VVT-i
Engine Transmission		CVT
Capacity	cc	1,798
Max. Power Output	kW (bhp) / rpm	73 (98) / 5,200
Max. Torque	Nm / rpm	142 / 2,800
Top Speed	km / h	165

MOTOR

Battery Type		Lithium-Ion (56 cells)
Motor Power	kW (bhp)	60(80)
Motor Torque	Nm	207
Total Vehicle Power (Engine & Motor)	kW(bhp)	100(134)

FUEL CONSUMPTION & CO₂ EMISSION

Fuel Consumption (Combined)	km/litre (litre/100km)	22.2 (4.5)
CO ₂ Emission	g / km	105
Fuel Tank Capacity	litres	45
VES Banding	Emissions grade	A2

CHASSIS

Suspension	Front / Rear	MacPherson Strut / Torison Beam
Brakes	Front / Rear	Ventilated Disc / Solid Disc
Tyre Size	litres	205 / 60R16

Addition of extra features may change figures in this chart.

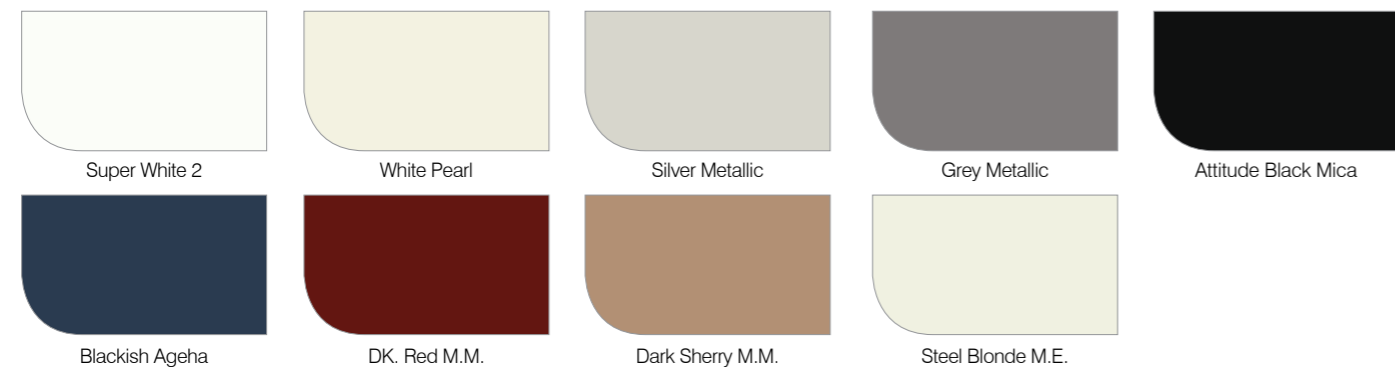
Toyota Motor Corporation and Borneo Motors (Singapore) Pte Ltd reserve the right to alter any details of specifications and equipment without notice.

Note:

Vehicles pictured and specifications detailed in the catalogue may vary from models and equipment available in your area.

Actual interior features and colours may differ from pictures shown. Vehicle body colour might differ slightly from the printed photos in this catalogue.

EXTERIOR COLOURS



FEATURES

EXTERIOR

Daytime Running Lights (LED)	●
LED Headlamps - Automatic (Light Control System)	●
Front Fog Lamps	●
Driver Power Door Locking	●
Smart Entry	●
Anti-Theft System	Immobiliser & Alarm
Intermittent Rear Wiper	●
Rear Fog Lamps	●
Rear Combination Lamps (LED)	Yes w/ Emergency Stop Signal
Green UV Filter Rear Mirrors	Retractable + Heated Mirrors

INTERIOR

Air Conditioning Control	Auto
Collapsible Rear Seats	All except Driver Seat
Steering Wheel Switch Control	Audio + Tel + Voice + Multi-Information Display
Cruise Control	●
Smart Start System	●
Electrochromic Rear View Mirror	●
Power Windows Front/Rear	●
4.2" Full-Colour Multi-Information Display (MID)	●
Eco Driving Indicator	●
Toyota Telematics System	●
ECO Mode	●
Electric Vehicle (EV) Mode	●
Power Drive Mode	●
Adjustable Front Seats	6 way Driver, 4 way Passenger
Audio System	6 speakers

SAFETY

7 SRS Airbags	●
Anti-lock Braking System (ABS)	●
Vehicle Stability Control (VSC)	●
Hill-start Assist Control (HAC)	●
Tyre Pressure Warning System (TPWS)	●
Emergency Stop Signal	●
Front Seat Belt Reminder	●
Rear Seat Belt Reminder	●
Automatic Headlamp Leveling	●
Light Cut-off Reminder	●

DRIVING INNOVATION SO YOU CAN DRIVE BETTER

With over 11.7 million hybrid vehicles sold globally*, Toyota has been developing and reinventing the future of hybrid and electric vehicles since 1997. Investing almost US\$9 billion a year, Toyota is one of the world's top R&D spenders. A worthy investment towards creative, ever-improving technology, sturdier rides and a Toyota you can count on; all of which you'll find embodied in the Prius+.

Toyota has been working towards creating ever-better vehicles that contribute to a sustainable society and mobility for customers.

Toyota Hybrid Synergy Drive technology gives you outstanding fuel efficiency and the chance to do your bit for the environment. Our world-renowned VVT-i engine allows you to maximise power output while minimising fuel consumption and emissions.

At Borneo Motors, we go beyond just delivering a great car. From quality control to our 10-year hybrid battery warranty and aftersales service, we do all that we can so you can drive your Toyota better, safer and easier.



Hybrid Synergy Drive (HSD)

TOYOTA ENVIRONMENTAL CHALLENGE 2050



To go beyond zero environmental impact and achieve a net positive impact, Toyota has set itself six challenges. All these challenges, whether climate change or resource and water recycling, are beset with difficulties, however we are committed to continuing toward the year 2050 with steady initiatives in order to realise sustainable development.



CHALLENGE 1

New Vehicle Zero CO₂ Emissions Challenge

Toyota has set a challenge to reduce vehicle CO₂ emissions by 90 percent in comparison with 2010 levels, by 2050. We will promote the development of next-generation vehicles and further accelerate the spread of these vehicles.



CHALLENGE 2

Life Cycle Zero CO₂ Emissions Challenge

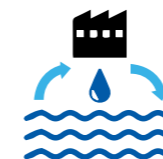
Toyota aims to reduce to zero not simply CO₂ emissions produced in traveling and manufacturing, but all CO₂ emissions, including in the processes of materials production, and disposal and recycling of vehicles.



CHALLENGE 3

Plant Zero CO₂ Emissions Challenge

The two main pillars of our strategy to achieve zero CO₂ emissions at our plants are 1) developing and introducing low-CO₂ technologies with ongoing Kaizen 2) adopting renewable energy sources and utilising hydrogen energy.



CHALLENGE 4

Challenge of Minimising and Optimising Water Usage

In automobile manufacturing, water is used in painting, forging and other processes. Therefore, even a small reduction in impact on the water environment is important. Our two measures to achieve this are reductions in the amount of water used and comprehensive water purification and returning to the Earth.



CHALLENGE 5

Challenge of Establishing a Recycling-based Society and Systems

Toyota has been working for 40 years on the challenge of resource recycling. Going forward, by rolling out to the world the technology and systems evolved in Japan, we will continue working on the challenge of establishing a recycling-based society.



CHALLENGE 6

Challenge of Establishing a Future Society in Harmony with Nature

Toyota has engaged in planting trees at plants together with environmental conservation activities in our surrounding area. To establish a society where humans and nature coexist in harmony, we are promoting several activities to connect regions, the world and the future.

*Figure as of Feb 2018