



Touran.



Volkswagen

Highlights.



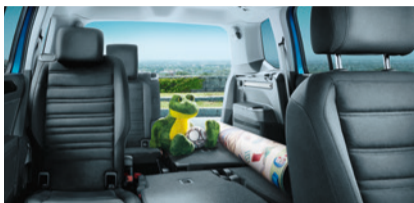
Powerful TSI engine

The turbocharged TSI engine of the Touran with 150 PS and 250 Nm delivers smooth, effortless performance in all driving conditions, combined with class-leading fuel economy.



LED headlamps

Compared to xenon headlamps, LED headlamps are more efficient and generate illumination that is similar to daylight. The LED daytime running lights also have a distinctive signature.



Versatile seating layout

The 3 seats in the second row can be individually adjusted lengthwise, with a total travel of 200mm. The backrest angle can also be adjusted so there are virtually limitless combinations.



3-zone 'Pure Air Climatronic'

The 'Pure Air Climatronic' system with 3-zone temperature control allows the driver, front and rear passengers to set their desired temperatures for maximum comfort. Its biogenic filter, unique to the MPV segment, helps prevent pollen and allergens from entering the cabin.



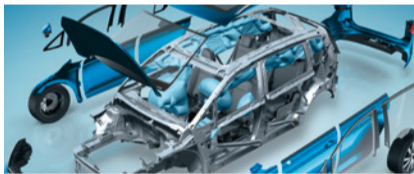
Touchscreen driver interface

Everything at your fingertips: the new generation infotainment systems with high-resolution 8" display feature quick processing and an extremely user-friendly interface. Smartphone connectivity via App-Connect is available as an option.



Driving profile selection

Four driving modes are available at the touch of a button – Normal, Sport, Eco and Individual. In Eco, the engine management and climate control are optimised for low fuel consumption.



Airbags

An advanced airbag system ensures that all occupants are well protected in an impact. The Touran has 7 airbags in all, including a driver's knee airbag and side curtain airbags that cover both front and rear passengers.



Quality paintwork

All Volkswagen models undergo a process that begins with raw steel coated in an electrically charged bath – with more primer than typical 'dip' applications. It also includes environmentally friendly, hot wax body cavity flooding, PVC undercoating and top colour coats – plus clear coats for additional protection.

Safety.



Front Assist with City Emergency Braking

This system monitors the front of the Touran and warns of potential collisions at higher speeds. In situations of up to 30 km/h, it can brake the car completely to a halt to prevent an accident.



Euro NCAP 2015 'Best in Class'

The European New Car Assessment Programme (Euro NCAP) ranked the Touran as the best compact MPV of 2015, awarding it the highest rating of five stars in the industry standard safety tests.

Technical data.

Touran 1.4 TSI (DSG)	
Engine	
Engine type	4-cylinder, TSI petrol engine with 16 valves, turbocharger
Capacity L / cc	1.4 / 1,395
Power PS / rpm	150 / 5,000 – 6,000
Torque Nm / rpm	250 / 1,500 – 3,500
Emission category	Euro 6
Gearbox	7-speed dual clutch automatic gearbox (DSG)
Performance	
Top speed km/h	209
Acceleration 0 – 100 km/h	8.9 sec
Driven wheels	Front
Fuel consumption	
Urban L/100km	6.7
Extra-urban L/100km	5.0
Combined cycle L/100km	5.6
CO ₂ emissions g/km	129
Fuel capacity L	58
VES banding	B
Exterior dimensions	
Length / width / height mm	4,527 / 1,829 / 1,659
Wheelbase mm	2,791
Track front / rear mm	1,569 / 1,542
Wheel size	6.5J x 16" / 6.5J x 17"
Tyre size	205/60 R16 / 215/55 R17
Turning circle m	11.5



Exterior colours.

Pure White	Titanium Beige Metallic	Urano Grey	Deep Black Pearl
Reflex Silver Metallic	Caribbean Blue Metallic	Atlantic Blue Metallic	Indium Grey Metallic
Oryx White*			

Upholstery colours.

Titanium Black

*Special colours featured come at an additional cost.
Leather type and colour is subject to availability. Volkswagen reserves the right to make changes to the design, specification, colour and information contained herein without notice.

Standard specification.

	Touran TSI Comfortline	Touran TSI Comfortline (EQP)
Exterior equipment		
‘Brighton’ Alloy wheels, 6.5J x 16", tyres 205/60 R16	–	–
‘Valllunga’ Alloy wheels, 6.5J x 17", tyres 215/55 R17	●	●
Automatic headlight activation, with ‘Leaving Home’ and ‘Coming Home’ functions	●	●
Side and rear windows in heat-insulating glass	●	●
Electrically foldable, adjustable and heated exterior mirrors	●	●
Silver anodised roof rails	●	●
Panoramic tilt / slide sunroof	●	●
LED licence plate lighting	●	●
Halogen headlamps	●	–
LED headlamps with cornering lights, separate LED daytime running lights	–	●
Rain sensor	●	●
Front fog lights including static cornering lights	●	●
Interior equipment		
‘Pure Air Climatronic’ air conditioning system with 3-zone temperature control	●	●
2 rear aircon vents	●	●
‘Vienna’ leather upholstery	●	●
Height adjustable front seats	●	●
Start-Stop system with regenerative braking	●	●
Lumbar support adjustment for front seats	●	●
Front center armrest with storage box	●	●
Multi-function display ‘Plus’	●	●
Leather-covered 3-spoke steering wheel	●	●
Multi-function controls on steering wheel	●	●
Leather gearshift knob	●	●
‘Brushed Aluminium’ inserts for dashboard and door trim panels	●	●
‘Composition Media’ radio with 8" touch screen display, CD player, AUX-IN multimedia socket, SD memory card slot, 8 speakers, Bluetooth, USB	●	●
2 reading lights in front and rear	●	●
LED reading lights	●	●
Folding tables on back of front seats	●	●
Glove compartment with cooling function	●	●
‘Easy Fold’ for individual second and third row seats	●	●
Armrest for second row seats	●	●
Overhead storage compartments	●	●
Sun visors with vanity mirrors	●	●
Removable luggage compartment cover	●	●
Automatic dimming interior mirror	●	●
Radio remote controlled central locking system with two folding keys	●	●

	Touran TSI Comfortline	Touran TSI Comfortline (EQP)
12-volt sockets in center console, front center armrest and luggage compartment	●	●
Keyless Entry and Start-Stop System (KESY) including 'Press & Drive' starting function	–	●
Driving profile selection	–	●
Safety equipment		
Airbags for driver and front passenger with front passenger airbag deactivation, driver's knee airbag	●	●
Curtain airbag system for front and rear passengers including side airbags at the front	●	●
Electronic Stabilisation Programme (ESP) including Anti-Lock Braking System (ABS) with brake assistant, Anti-Slip Regulator (ASR), Electronic Differential Lock (EDL) and Engine Drag Torque Control (EDTC)	●	●
Safety-optimised front headrests	●	●
Longitudinal and height adjustment for front headrests	●	●
ISOFIX child seat mounting points	●	●
3-point seat belts for all occupants, with height adjustment in front	●	●
Seat belt tensioners for front and second row seats	●	●
Front seat belt reminder warning signal and light	●	●
Tyre pressure monitoring system	●	●
Anti-theft alarm system with back up horn, interior monitoring and towing protection	–	●
Front and rear disc brakes ventilated in front	●	●
Electronic parking brake with Auto Hold	●	●
Electronic vehicle immobiliser	●	●
Rear view camera	●	●
Electromechanical speed-sensitive power steering	●	●
Reverse sensors	●	●
Rear fog light	●	●
Active bonnet	●	●
Front Assist with City Emergency Braking	–	●
Proactive occupant protection system	–	●
Cruise control system	●	●

Aftersales.

Here at Volkswagen, you can be assured of our service quality.
We deliver as promised!



Express Friday.

Get standard 15,000km and 30,000km servicing done in under 3 hours.*



Service Appointment Promise.

Our promise to you – a service confirmation date within 3 working days*, or enjoy a complimentary vehicle pick-up and delivery service.



Online Service Booking.

Convenience at your fingertips with online service bookings at aftersales.vw.com.sg



Volkswagen Warranty

- 5-year or 100,000km warranty (whichever is earlier)
- 24-hour Volkswagen Roadside Assistance
- 12-year body protection warranty*
- 5-year paintwork warranty

Warranty terms and conditions apply: www.vw.com.sg/warranty

* Available at any Volkswagen Centre Singapore.

^Excluding repair work.

*Applicable only for erosion from inside of vehicle.

Volkswagen Centre Singapore

247 Alexandra Road
Singapore 159934
Tel: 6474 8288

Das WeltAuto

1 Kampong Ampat
Singapore 368314
Tel: 6496 6488

Light Commercial Vehicles

1 Kampong Ampat
Singapore 368314
Tel: 6922 3500

Services

Aftersales service hotline: 6305 7299
Aftersales service fax: 6474 3643
24-Hr Roadside Assistance: 6333 8800

Service enquiry email

service@vw.com.sg

www.vw.com.sg

Subject to changes without notice.

Printed in Singapore.

Issue: August 2018