



Innovation  
that excites

# PULSAR



www.tanchong.com

Tan Chong Motor Sales Pte Ltd  
www.nissan.com.sg

C13-0117-3K

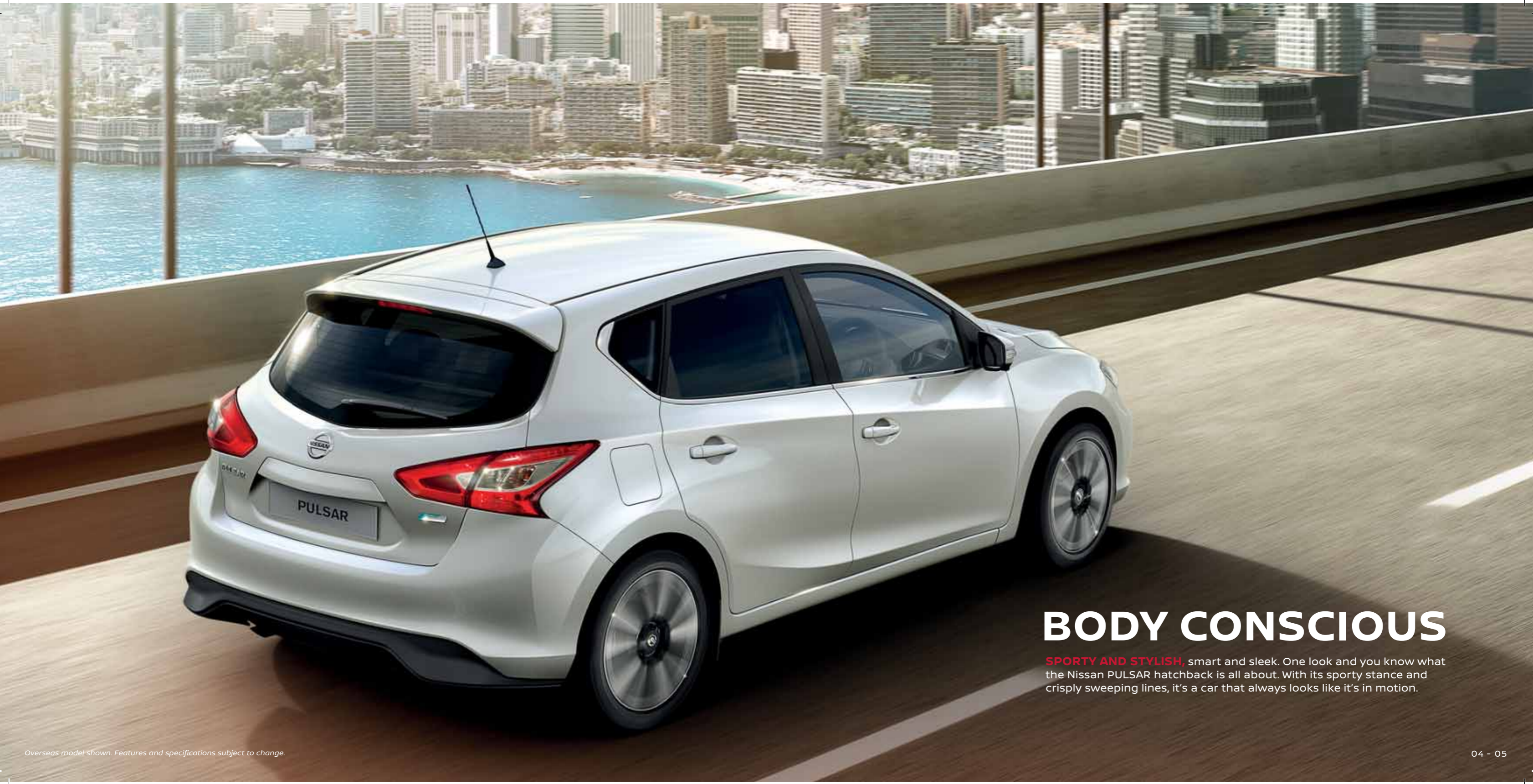
# NISSAN PULSAR

## IT'S GOT IT ALL

**MEET YOUR MATCH.** Sophisticated and self-assured with a bold, athletic design and a range of advanced technologies, PULSAR energizes your drive. This uncompromising star means business.





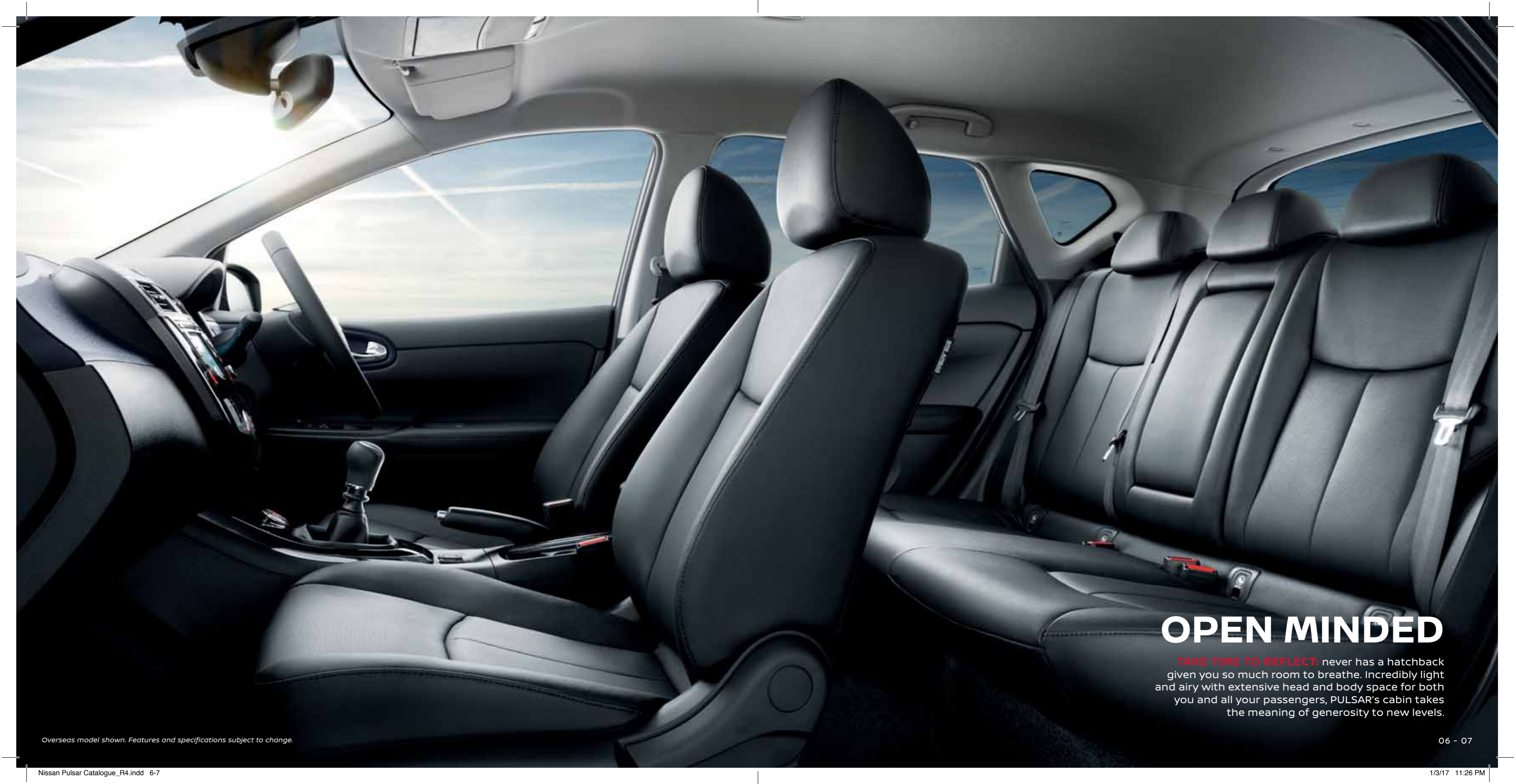


# BODY CONSCIOUS

**SPORTY AND STYLISH**, smart and sleek. One look and you know what the Nissan PULSAR hatchback is all about. With its sporty stance and crisply sweeping lines, it's a car that always looks like it's in motion.

*Overseas model shown. Features and specifications subject to change.*





## OPEN MINDED

**TAKE TIME TO REFLECT:** never has a hatchback given you so much room to breathe. Incredibly light and airy with extensive head and body space for both you and all your passengers, PULSAR's cabin takes the meaning of generosity to new levels.



**EXTREMELY  
GENEROUS**

**ROOMINESS DEFINED**  
Thanks to excellent knee room,  
your rear passengers can stretch  
their legs while you're on the move.

**KNEE ROOM**  
**692<sup>MM</sup>**





# SURPRISING ALL ROUND

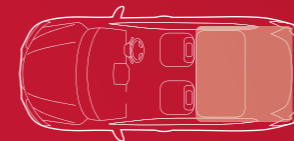
**INSIDE NISSAN PULSAR**, all is elegance and finesse: soft touch materials and chrome detailing, extra-wide door armrests and amazing all-round visibility. With the comfort and convenience of advanced features like the Nissan Intelligent Key, Push Start Ignition, Automatic Headlamps and Wipers and Dual Zone Climate Control, it's a model of contemporary quality and style.





## SLIDE, FOLD, PACK & GO

Despite its excellent rear roominess, Nissan PULSAR's family-size luggage space makes sure nothing gets left behind. What's more, its 385L trunk capacity becomes 1395L with the seats folded down. Thanks to four different seat combinations and a 60/40 split, you've plenty of options for bulkier goods - so slide in the golf bag, pack up the pushchair, load the bikes and go!



**1395** LITRES

You, your passenger and a whole load of cargo.

Keep smaller items safe and within reach, thanks to lots of handy compartments and hidden storage space.





NISSAN ADVANCED DRIVE-ASSIST DISPLAY

# INNOVATION UNDER YOUR NOSE

It's all there, right in front of you, on a full colour 5" TFT information display: from fuel economy to average speed, caller ID to audio track details, Nissan's Advanced Drive-Assist Display serves up all your info under your nose, so you keep your eyes on the road.

6:10 PM 22°C  
Fuel Economy  
Average 5.8 l/100km  
D 22km 0.0 l/100km  
**FUEL ECONOMY**

6:10 PM 22°C  
Average Speed  
25.7 MPH  
D 22km 0.0 l/100km  
**AVERAGE SPEED**

17:00 22°C  
Audio Muted  
Fredo  
Push or  
0.0 l/100km  
**CALLER ID**

17:00 22°C  
Bluetooth Audio  
Surprise Hotel  
Fool's Gold  
ENTER = Change Source  
0.0 l/100km  
**AUDIO**

17:00 22°C  
Tyre Pressure  
kPa  
180 240  
240 70  
0.0 l/100km  
**TYRE PRESSURE MONITORING SYSTEM**

6:10 PM 22°C  
iPod  
Track 1  
Mad About You  
Kirby Williams  
P 22km 0.0 l/100km  
**iPOD**





# PUT YOUR FOOT DOWN - WITH A CLEAN CONSCIENCE

There's no compromise between power and performance with Nissan PULSAR. The 1.2L turbocharged engine combines impressive fuel economy and high torque responsiveness, delivering 115ps horsepower and 165Nm torque at a fuel efficiency of 5.1L/100km.

## **XTRONIC CVT**

Xtronic CVT enhances driving pleasure further by providing smoother, more responsive acceleration while improving fuel economy too.

## **IDLING STOP SYSTEM**

To save even more fuel, Nissan's Idling Stop System stops the engine when it's idle, at traffic lights for example, and then smoothly and quickly restarts as you push the accelerator pedal to pull away.



## **ACTIVE TRACE CONTROL**

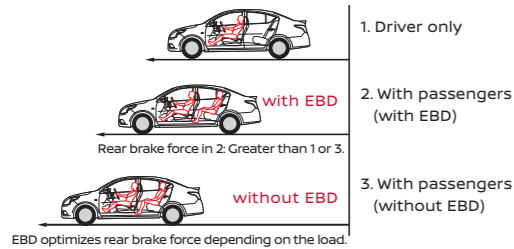
Delivers confident handling around the corners by controlling brake pressure at individual wheels to aid tracing at corners and help smooth vehicle response.



## NISSAN SAFETY SHIELD

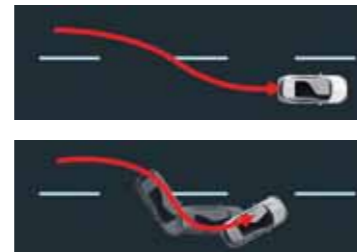
# LOOKING OUT FOR YOU

In the area of safety technology, Nissan pursues innovation as part of its "Safety Shield" concept, an advanced, proactive approach to safety issues based on the idea that cars should help protect people. This approach provides various measures to help the driver and passengers better avoid dangers in ways that are optimized to each of a wide range of circumstances that the vehicle may be in, from "risk has not yet appeared" to "post-crash."



### ELECTRONIC BRAKE FORCE DISTRIBUTION (EBD)

Contributes to safe driving by enhancing braking control to optimize braking performance with loads of various weights.

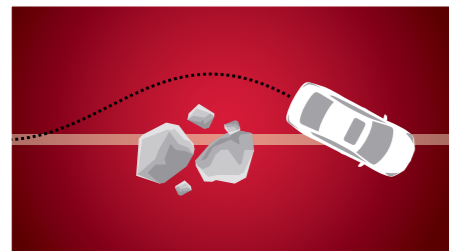


Vehicle with VDC

Vehicle without VDC

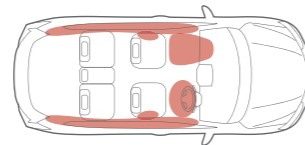
### VEHICLE DYNAMIC CONTROL (VDC)

Automatically prevents the vehicle from sliding sideways on slippery road surfaces when changing lanes or negotiating a curve.



### ANTI-LOCK BRAKING SYSTEM (ABS) WITH BRAKE ASSIST (BA)

ABS optimises braking while maintaining directional control, especially in an emergency situation and on slippery surfaces. BA compensates for a light foot on the brake by generating a greater ratio of braking force to pedal force.



**6** STANDARD AIR BAGS

### HELPING TO PROTECT YOU

Protect you and the people you love with dual front, side and curtain airbags.



Safety Award in 2014, PULSAR was awarded the maximum five-star rating by Euro NCAP (European New Car Assessment Programme).

## COLOURS



WHITE (QM1)



BRILLIANT WHITE PEARL (QAB)



SILVER METALLIC (KLO)



BLADE SILVER (K51)



BLACK (GN0)



BRONZE (CAP)



RADIANT RED (NAH)



SOLID RED (Z10)



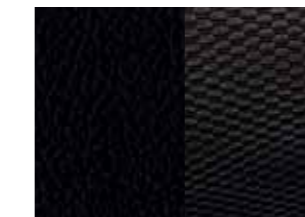
AZURE BLUE (RBR)

## WHEELS



17 Inch Alloy Wheels

## INTERIOR



Graphite Leather with Fabric (Available on 1.2L Lite)



Graphite Leather (Available on 1.2L Premium)

Tan Chong Motor Sales Pte Ltd reserves the right to make any changes without notice concerning colours, equipment and specifications detailed in this brochure, or to discontinue individual models. The colours of vehicles may differ slightly from those in the brochure.



EQUIPMENT		
	1.2L DIG-T Lite	1.2L DIG-T Premium
<b>EXTERIOR</b>		
17 Inch Alloy Wheels	●	●
Day Time Running Lights (Integrated in Fog Lamps)	●	●
LED Headlamps with Accented Lights	●	●
Auto Headlamps	●	●
Fog Lights with Chrome Finisher	●	●
Side Mirrors Indicators	●	●
<b>INTERIOR</b>		
Leather Wrapped Steering Wheel	●	●
Multi-Functional Steering Wheel	●	●
Advanced Drive-Assist Display	●	●
Auto Dimming Rear-View Mirror	●	●
Vanity Mirror (Driver & Front Passenger)	●	●
5.8 Inch QVGA Screen	●	
6.9 Inch High-Capacitive Touch Screen Interface		●
Audio System with 6 Speakers	●	●
Navigation		●
Rear-View Camera	●	●
Bluetooth Connectivity	●	●
Dual Zone Auto Climate Air-Conditioning	●	●
Nissan Intelligent Key With Push Start Ignition	●	●
Leather with Fabric Upholstery	●	
Leather Upholstery		●
Rear Seat with Arm Rest	●	●
60:40 Foldable Rear Seats	●	●
<b>MECHANICAL</b>		
Idling Stop System (ISS)	●	●
<b>SAFETY &amp; SECURITY</b>		
Temper Tyre	●	●
2-Point Rear Parking Sensor	●	●
Vehicle Immobiliser with Alarm System	●	●
6 Airbags (Driver & Front Passenger; Side & Curtain)	●	●
ISOFIX Anchorage Points	●	●
Child Tether Anchorage Points	●	●
Anti-Lock Braking System (ABS), Electronic Brakeforce Distribution (EBD) & Brake Assist (BA)	●	●
Vehicle Dynamic Control (VDC)	●	●
Active Trace Control (ATC)	●	●
Forward Emergency Braking (FEB)	●	●
Tyre Pressure Monitoring System (TPMS)	●	●

SPECIFICATIONS		
<b>Engine</b>		
Code		HRA2
Type		DOHC, 4-Cylinder, 16-Valve, Turbocharged
Displacement	cc	1,197
Bore x Stroke	mm	72.2 x 73.1
Max Power	PS(kW)/rpm	115(85)/5,200
Max Torque	Nm/rpm	165/1,750
Compression Ratio		10.1
<b>Transmission</b>		
Type		Xtronic CVT with Manual Mode
Gear Ratio		4.006 - 0.550
	Reverse	3.771
Final Gear Ratio		3.517
<b>Fuel/CO<sub>2</sub> Emission</b>		
Fuel System		Direct Injection
Fuel Consumption (Combined Cycle)	L/100km	5.1
CO <sub>2</sub> Emission (Combined Cycle)	g/km	119
<b>Steering/Suspension/Brakes</b>		
Steering		Electric Power Assisted, Rack & Pinion Steering
Suspension	Front	MacPherson Strut
	Rear	Twist Beam Coil Spring
Brakes	Front	Disc
	Rear	Disc
<b>Wheels/Tyres</b>		
Wheels		17 Inch Alloy Wheels
Tyres	Front	205/50R17
	Rear	205/50R17
<b>Dimensions/Weight</b>		
Overall Length	mm	4,387
Overall Width	mm	1,768
Overall Height	mm	1,515
Wheelbase	mm	2,700
Thread	Front	mm
	Rear	mm
Min. Ground Clearance	mm	160
Min. Turning Radius	Curb to Curb	m
Curb Weight	kg	1,265
Gross Vehicle Weight	kg	1,750
<b>Capacities</b>		
Seating	Persons	5
Trunk	L	385
Fuel Tank	L	46

Tan Chong Motor Sales Pte Ltd reserves the right to make any changes without notice concerning colours, equipment and specifications detailed in this brochure, or to discontinue individual models. The colours of vehicles may differ slightly from those in the brochure.



# Nissan Sales & Service Centres

## Extensive Showroom & Service Centre Network

Our network of 5 showrooms and 5 service centres are strategically located islandwide so you'll never have to travel far should you need to get your car checked and fixed or if you simply wish to view our latest models.

### SALES OFFICES



**BUKIT TIMAH SHOWROOM**  
911 Bukit Timah Road  
Tan Chong Motor Centre  
Singapore 589622  
Tel: 6466 7711



**LENG KEE SHOWROOM**  
25 Leng Kee Road  
Singapore 159097  
Tel: 6479 7711



**UBI SHOWROOM**  
19 Ubi Road 4  
Singapore 408623  
Tel: 6266 7711

### AUTHORISED DEALERS

Hong Heng Co Pte Ltd  
33 Sembawang Road,  
Hong Heng Garden, #01-01/02  
Singapore 779084  
Tel: 6452 1112

Red Auto Pte Ltd  
21 Opal Crescent  
Singapore 328416  
Tel: 6293 1200

### SERVICE CENTRES

**BUKIT TIMAH SERVICE CENTRE**  
913 Bukit Timah Road  
Singapore 589623  
Tel: 6469 4091/2/3 (Passenger Vehicle)  
6460 1690/1 (Commercial Vehicle)  
Fax: 6469 7472

**LENG KEE SERVICE CENTRE**  
25 Leng Kee Road  
Singapore 159097  
Tel: 6703 8511/2/3  
Fax: 6479 5019

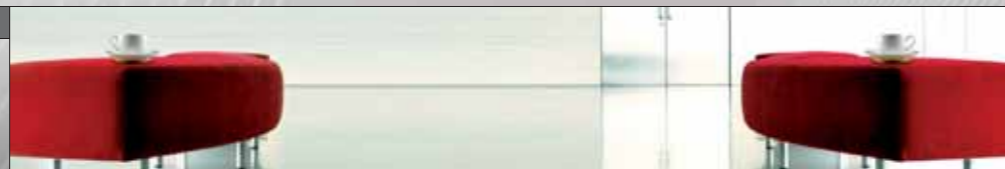
**TOA PAYOH SERVICE CENTRE**  
17 Lorong 8 Toa Payoh  
Auto World  
Singapore 319254  
Tel: 6357 0753/4/5  
Fax: 6356 4922

**UBI SERVICE CENTRE  
(Autolution Industrial)**  
19 Ubi Road 4  
Singapore 408623  
Tel: 6703 8680  
Fax: 6846 7483

**JURONG SERVICE CENTRE  
(TC AutoClinic)**  
No.1 Sixth Lok Yang Road  
Singapore 628099  
Tel: 6262 2212  
Fax: 6262 3692

### PARTS CENTRE

No.1 Sixth Lok Yang Road  
Singapore 628099  
Tel: 6703 8409/10  
Fax: 6253 2742



# LOVE THE NISSAN EXPERIENCE



## DUO PROGRAMME

DUO is a community specially created by the Tan Chong Group, dedicated solely for customers of Tan Chong. As a DUO member, you enjoy exclusive membership privileges and special promotional deals, everything from automobiles to lifestyle privileges. The DUO community hosts regular events and activities that allow the coming together and interaction between Tan Chong and its customers. Complete the Nissan Experience by signing up at [www.duo.com.sg](http://www.duo.com.sg)



## GENUINE NISSAN PARTS

While imitation parts are relatively cheaper, they are also inferior in quality and have shorter service life which may result in greater loss to you in the long run. Only **Genuine Nissan Parts** offer maximum performance and reliability, fulfilling the highest quality standards set by Nissan and come with a warranty for greater peace of mind. Quality that clearly makes a world of difference.



## NISSAN PREVENTIVE MAINTENANCE PROGRAMME

The **Nissan Preventive Maintenance Programme** is a comprehensive package competitively priced to offer you true value for money. Under this programme, all Nissan cars are maintained in accordance with Nissan's standard and quality so that they are kept in tip-top condition and serve owners well for years to come.