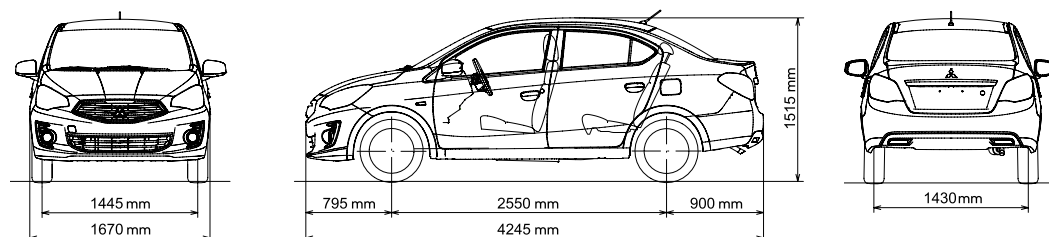


## TECHNICAL SPECIFICATIONS

Capacity (cc)	1,193
Max Power (Ps/rpm)	80/6,000
Max Torque (Nm/rpm)	106/4,000
Fuel System	Electronic Controlled Injection - Multi Point Injection
Engine Type	DOHC MIVEC (3A92), 3-Cylinder, 12-Valve Petrol Engine
Wheel Drive	Front Wheel Drive
Transmission	INVECS-III CVT (Continuously Variable Transmission)
Top Speed (km/h)	174
0-100km (sec)	13.3
Fuel Economy (ℓ/100 km)	4.9 (20.4 km/ℓ)
Fuel Tank Capacity (ℓ)	42
Carbon Emission (g/km)	113
Curb Weight (kg)	940
Length/Width/Height (mm)	4,245/1,670/1,515
Wheelbase (mm)	2,550
Turning Radius (m)	4.8
Tyre Size	185/55 R15



## EXTERIOR COLOURS



WE DRIVE FIRST CLASS

Mitsubishi Motors Singapore

This brochure is intended to show the general appearance of the Mitsubishi Attrage. Some of the photographs depict left hand drive vehicles whose specifications may not necessarily conform to vehicles imported into Singapore. Cycle & Carriage Automotive Pte Ltd reserves the right, whilst preserving the essential characteristics of the models described, to introduce at any time, modifications, changes of details, equipment or accessories as may be considered necessary. Printed in July 2017.

# Attrage



WE DRIVE FIRST CLASS

Mitsubishi Showrooms  
239 Alexandra Road Tel: 6473 9722  
22 Ubi Road 4 Fulco Building Tel: 6746 3000

[www.mitsubishicars.com.sg](http://www.mitsubishicars.com.sg)





# EVERYTHING AND A LITTLE MORE

## DESIGN

### THE ECO-FRIENDLY SEDAN YOU'VE BEEN WAITING FOR

Everything you seek in an eco-friendly sedan is here in the Attrage. From outstanding fuel economy to easy maneuverability, it meets your highest expectations. But the Attrage doesn't just stop there. Its surprisingly roomy interior and wide-ranging amenities reach far beyond its class to enhance driving pleasure. The attractive exterior with bold sedan face and wide, stable rear is also aerodynamically shaped to enhance eco performance. The more you drive the Attrage, the more you appreciate the little extras that make driving a joy.



#### Dark chrome front grille

Just the right touch of elegance to make this sedan a class above the rest.



#### Front fog lamp

Dynamic styling with a progressive chrome bezel.

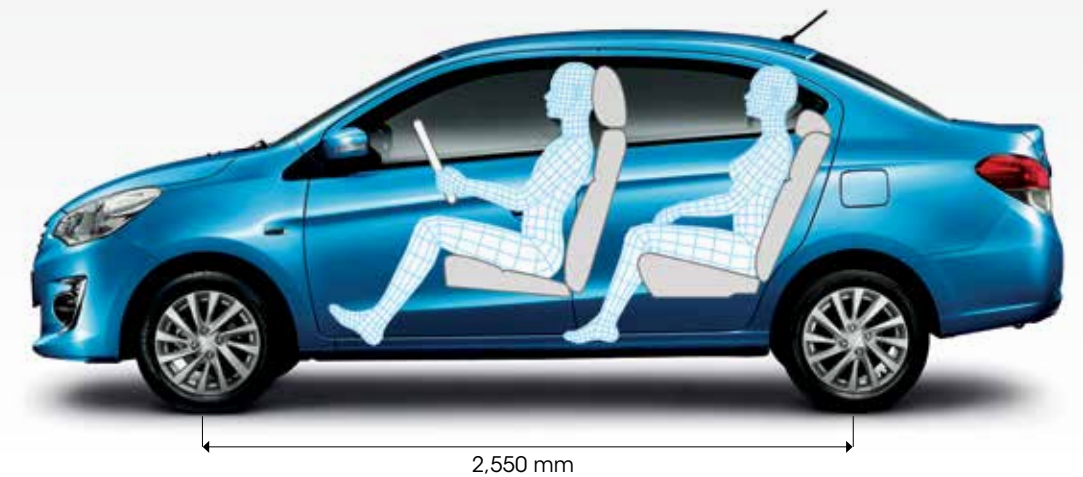


#### Dark chrome 15-inch alloy wheel

Refreshingly stylish wheels add an eye-catching accent.

### CLASS-LEADING INTERIOR SPACE

Welcome to a space where you enjoy ample roominess for optimal comfort. The simple yet stylish interior surrounds you and your passengers with quality materials, smooth flowing lines and a seamless fit and finish that conveys quality craftsmanship. Soft yet supportive seating, thoughtful amenities and attractive features like silver accents further enhance your driving pleasure. In the Attrage, travelling is always a relaxing and enjoyable experience.



#### People-centred design

The Attrage puts people first. Mitsubishi Motors refined every last detail to create an interior that maximises passenger space, meets practical needs and satisfies your emotions. A longer wheelbase translates to generous legroom, giving you ample spaciousness. From supportive headrests and ergonomic controls, it will please you and your passengers to a surprising degree. Sit back, relax and enjoy the ride.







## **LARGE TRUNK**

Large and easy to load, the trunk offers a surprisingly large storage capacity of 450 litres (measured by VDA method).



## **AMENITIES**

### **CENTRE CUP HOLDER**

This conveniently centred cup holder keeps large beverages within easy reach.



### **SEATBACK POCKET**

Place your maps where you can easily find them whenever the need arises.



### **CONVENIENCE HOOK**

Shopping bags stay upright when hooked behind the seat.



### **GLOVE BOX AND TRAY**

Spacious enough to fit small items like sunglasses and coins, as well as bulkier items like cameras.



### **FRONT DOOR POCKET**

The perfect place to keep personal items while you drive.



### **FLOOR CONSOLE CUP HOLDERS**

Keep drinks within easy reach of you and the front passenger.





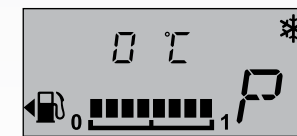


## COMBINATION METER CLUSTER WITH SILVER GARNISH

Housing a white illuminated display, the meters are now even clearer and easier to read. Accompanied by a tachometer and silver garnish. Brightness is adjustable.



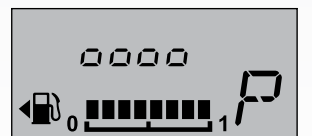
## General-purpose monitor: Multi-information display



Odometer



Trip meter



Meter illumination control



Driving range display



Average fuel consumption



Service reminder



## FULL AUTO AIR CONDITIONER

Comfortable cabin temperatures are yours to enjoy all year round.



## USB PORT

Designed for easy connection with digital audio players, etc.



## POWER DOOR MIRROR

Handy controls make it easy to achieve the right viewing angle.



## SIDE TURN LAMP ON DOOR MIRROR

By clearly signalling intentions, you enhance your driving safety.



## HEIGHT-ADJUSTABLE DRIVER'S SEAT

Adjust the height of the driver's seat to suit your preference.



## INNER DOOR HANDLE

Stylish handles give the doors an attractive silver touch.



## HANDS-FREE SYSTEM AND AUDIO CONTROLS

Convenient controls for the audio system and Bluetooth® hands-free mobile phone system are mounted on the steering wheel for easy-to-reach access.

Note: Bluetooth® is a trademark of Bluetooth SIG Inc.



## FUEL EFFICIENCY

**ECO**  
**20.4km/ℓ**

The lightweight body and smooth aerodynamics contribute to class-leading fuel efficiency, as well as smooth and stable acceleration. Travelling is more affordable, eco-friendly and enjoyable in the Attrage.

### 1.2ℓ DOHC 12-VALVE MIVEC ENGINE

When you demand acceleration, the Attrage responds with spirited torque and horsepower while maintaining impressive fuel economy.



### Mitsubishi Innovative Valve timing Electronic Control system (MIVEC)

Intake valve timing is continuously optimised in response to driving conditions to ensure smooth powerful response at all times.

### OUTSTANDING AERODYNAMIC PERFORMANCE

The Attrage is streamlined based on advanced computer simulation to slip through the wind and lower noise, raise fuel efficiency and enhance handling stability.



### Lightweight body

The weight-optimised body is one of the lightest in its class, thanks to the ample use of high-tensile steel that also offers impressive strength and rigidity that contribute to safety and excellent handling.

### ECO LAMP

This lamp illuminates whenever you operate the accelerator pedal in an eco-friendly way. It encourages you to develop good driving habits that lower fuel costs and contribute to a cleaner environment for everyone.



### INVECS-III CVT

The INVECS-III (Intelligent & Innovative Vehicle Electronic Control System III) CVT wide-ratio transmission maintains optimal rpm for high performance and fuel economy. You'll enjoy smooth acceleration and deceleration, as well as efficiently selected gear ratios in all driving conditions.

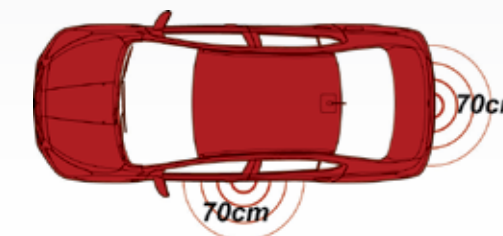


## CONVENIENCE



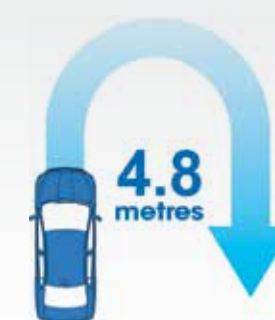
### KEYLESS OPERATION SYSTEM (KOS)

Operating the doors is especially easy. Just by carrying the keyless operation key in your bag or pocket, you can press the outer button on the driver's door or trunk to open or lock it within 70 cm of the vehicle. Alternatively, press the engine switch to start or stop the engine.



### MINIMUM TURNING RADIUS

An extremely tight turning radius, one of the smallest in its class, makes the Attrage easy to manoeuvre through narrow city streets and crowded parking lots. Drivers of every experience level will find the Attrage simple to handle.



## ETACS (Electronic Time and Alarm Control System)



### HEADLIGHT AUTO OFF FUNCTION

After switching off the ignition and stepping out of the car, the headlights automatically turn off to help conserve battery power.



### 15-SECOND INTERIOR LIGHT DELAY

After removing the ignition key from the cylinder, the interior light remains on for 15 seconds to allow scanning for possessions before exiting.



### DELAYED-ACTION POWER WINDOW OPEN/CLOSE SYSTEM

Even after shutting off the engine, the power windows can be opened or closed for 30 seconds (before opening the door).



### AUTO DOOR RELOCK SYSTEM

Within 30 seconds of pressing the unlock button from outside the vehicle, this system will automatically relock all doors if none have been opened.



### LANE CHANGE TURN SIGNAL SYSTEM

When changing lanes, you can lightly touch the signal lever to flash the turn signal three times. Flashing is also indicated on the instrument panel.



### AUTO SPEED ADJUSTABLE WIPERS

In the Timing mode, the window wipers operate normally at vehicle speeds below 60 km/h and faster at higher vehicle speeds.



### OPEN DOOR ALARM

An alarm sounds automatically if you start driving while a door remains partially or fully open.



## SAFETY

### DRIVER AND FRONT PASSENGER'S AIRBAG SYSTEM

In the event of a collision, front SRS airbags activate to help protect you and the front passenger by absorbing the force of impact.



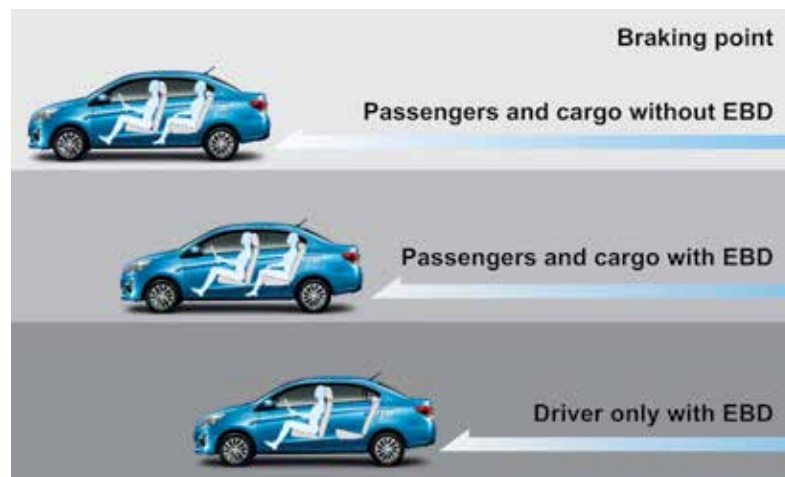
### ANTI-LOCK BRAKE SYSTEM (ABS)

The four-wheel Anti-lock Brake System helps prevent the wheels from locking up during emergency braking so you can maintain greater steering control, even on slippery roads.



### ELECTRONIC BRAKE-FORCE DISTRIBUTION (EBD)

Electronic Brake-force Distribution distributes braking force to all four wheels to enhance braking performance.



### IMMOBILIZER

The engine can only be started when a dedicated key with matching authentication code is used. This advanced security system effectively prevents vehicle theft.



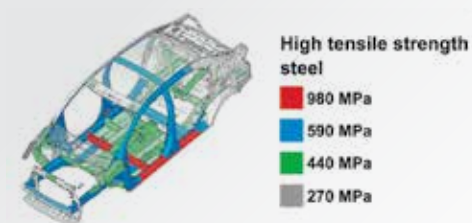
### PRETENSIONERS

Pretensioners on the front seatbelts automatically tighten the belts in the event of a frontal collision to help restrain the driver and front passenger, and reduce the force of impact when the front airbags are deployed.



### RISE BODY

To protect you and your passengers, the Attrage features a solid RISE (Reinforced Impact Safety Evolution) body constructed of high tensile strength steel that effectively absorbs and disperses crash energy from all directions while also significantly reducing overall weight.



### POWER WINDOWS

The driver's side window can be raised or lowered with a single touch and features an anti-trap mechanism for safety.



### LED HIGH-MOUNT STOP LAMP

An LED stop lamp is mounted in the rear window to enhance safety by clearly indicating your braking intentions to drivers behind you.



## AFTER-SALES CARE



At Cycle & Carriage, we take pride in the competence of our after-sales staff, who are fully qualified to look after your Mitsubishi vehicle. Our team is always up to date with the latest developments thanks to a rigorous ongoing training programme conducted by our in-house trainers, as well as trainers from the Manufacturer.

With more than a century in the automotive industry, you can entrust your vehicle to us. We use the latest proprietary diagnostic system, Grade A genuine parts and the right specifications of lubricants and consumables, to keep your Mitsubishi vehicle running at its optimal condition. You also receive peace of mind with our warranties:

Parts replacement: 6 months or 10,000 km\*, whichever comes first.

Tyres replacement: 5 years\* from date of purchase.

We also provide services such as guaranteed turnaround Express Service\*, Pick-up & Delivery Service, Service Plans and many more.

\*Terms & conditions apply.

\*30% off final bill if we do not turn around within the guaranteed time.



**10 YEAR**  
**ENGINE**  
**WARRANTY**

**5 YEAR**  
**UNLIMITED**  
**MILEAGE WARRANTY**

### 10-YEAR ENGINE WARRANTY AND 5-YEAR UNLIMITED MILEAGE WARRANTY

Drive in total comfort and security. All Mitsubishi passenger cars\* will come with a 10-year engine engine warranty† and a 5-year unlimited mileage warranty.

\*Excludes hybrid, electric, turbo-charged and commercial vehicles.

†Subject to a maximum mileage of 200,000 km or 10 years, whichever comes earlier. Terms and conditions apply.

### MITSUBISHI 24-HOUR ROAD ASSISTANCE

We know sometimes the unexpected happens. Please call our 24-hour hotline at 6475 9500 for any emergencies and we will be glad to assist.

### CUSTOMER ASSISTANCE CENTRE

As your trusted partner, our Customer Assistance Centre is always ready to assist you with any enquiry or feedback. Simply call 6471 9111 or email CustomerAssistanceCentre@cyclecarriage.com.sg.